

# ARCTIC CAT®

## Illustrated Parts Manual

### **440 Sno Pro®**

Model Number S2005ACBPRUSG

Model Number S2005ACBPROSG (International)

Model Number S2005ACAMOUSG (Modified Race Sled)



# 2005

# TABLE OF CONTENTS

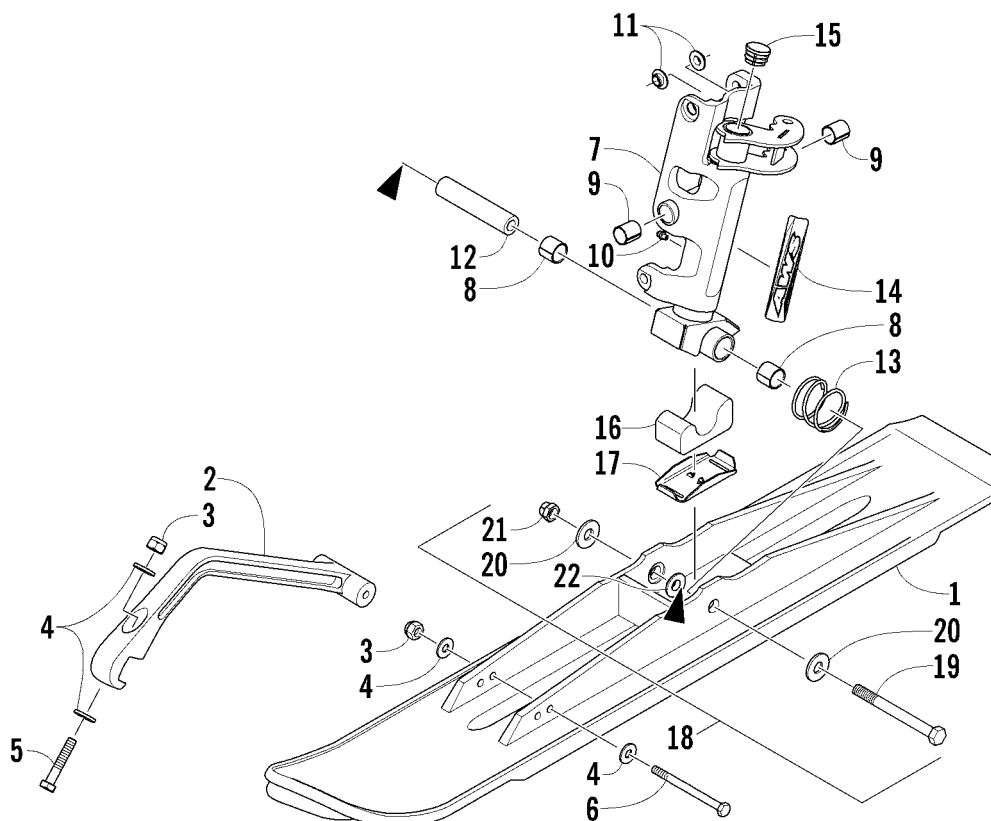
## 2005 440 Sno Pro

(Model No. S2005ACBPRUSG) (Model No. S2005ACBPROSG - International)

(Model No. S2005ACAMOUSG - Modified Race Sled)

SKI AND SPINDLE ASSEMBLY .....	1
A-ARM ASSEMBLY .....	2
SHOCK ABSORBER AND SWAY BAR ASSEMBLY .....	3
FRONT SUSPENSION SHOCK ABSORBER .....	4
STEERING POST ASSEMBLY .....	5
TIE ROD ASSEMBLY .....	6
CONTROL ASSEMBLY .....	7
CONTROL ASSEMBLY (Modified Race Sled) .....	8
HANDLEBAR ASSEMBLY .....	9
HYDRAULIC BRAKE CONTROL ASSEMBLY .....	10
DRIVE TRAIN SHAFTS AND BRAKE ASSEMBLIES .....	11
DRIVE/DROPCASE ASSEMBLY .....	12
SLIDE RAIL AND TRACK ASSEMBLY .....	13
IDLER WHEEL ASSEMBLY .....	14
REAR SUSPENSION FRONT ARM ASSEMBLY .....	15
REAR SUSPENSION SHOCK ABSORBER ASSEMBLY .....	16
REAR SUSPENSION FRONT ARM SHOCK ABSORBER .....	17
REAR SUSPENSION REAR ARM ASSEMBLY .....	18
REAR SUSPENSION REAR ARM SHOCK ABSORBER .....	19
FRONT FRAME ASSEMBLY .....	20
COMPLETE CHASSIS .....	21
FOOTREST AND STEERING SUPPORT ASSEMBLY .....	22
HOOD AND WINDSHIELD ASSEMBLY .....	23
HOOD AND WINDSHIELD ASSEMBLY (Modified Race Sled) .....	24
HEADLIGHT, INSTRUMENTS, AND WIRING ASSEMBLIES .....	25
TIMING RESISTOR AND WIRING ASSEMBLY (Modified Race Sled) .....	26
CONSOLE AND SWITCH ASSEMBLY .....	27
BELLY PAN ASSEMBLY .....	28
BELT GUARD ASSEMBLY .....	29
GAS TANK ASSEMBLY .....	30
SEAT ASSEMBLY .....	31
TUNNEL, REAR BUMPER, AND TAILLIGHT ASSEMBLIES .....	32
COOLING ASSEMBLY .....	33
ENGINE AND RELATED PARTS .....	34
EXHAUST ASSEMBLY .....	35
AIR SILENCER ASSEMBLY .....	36
AIR SILENCER ASSEMBLY (Modified Race Sled) .....	37
DRIVE CLUTCH .....	38
DRIVEN CLUTCH .....	39
CARBURETOR .....	40
PARTS LIST (Modified Race Sled) .....	41
CYLINDER AND HEAD ASSEMBLY .....	42
CRANKCASE ASSEMBLY .....	43
PISTON AND CRANKSHAFT .....	44
REED VALVE ASSEMBLY .....	45
WATER PUMP/WATER MANIFOLD .....	46
RECOIL STARTER .....	47
MAGNETO .....	48
ELECTRICAL .....	49
SERVOMOTOR ASSEMBLY .....	50
ALTERNATE CARBURETOR PARTS .....	51
RELATED ITEMS .....	Back Cover

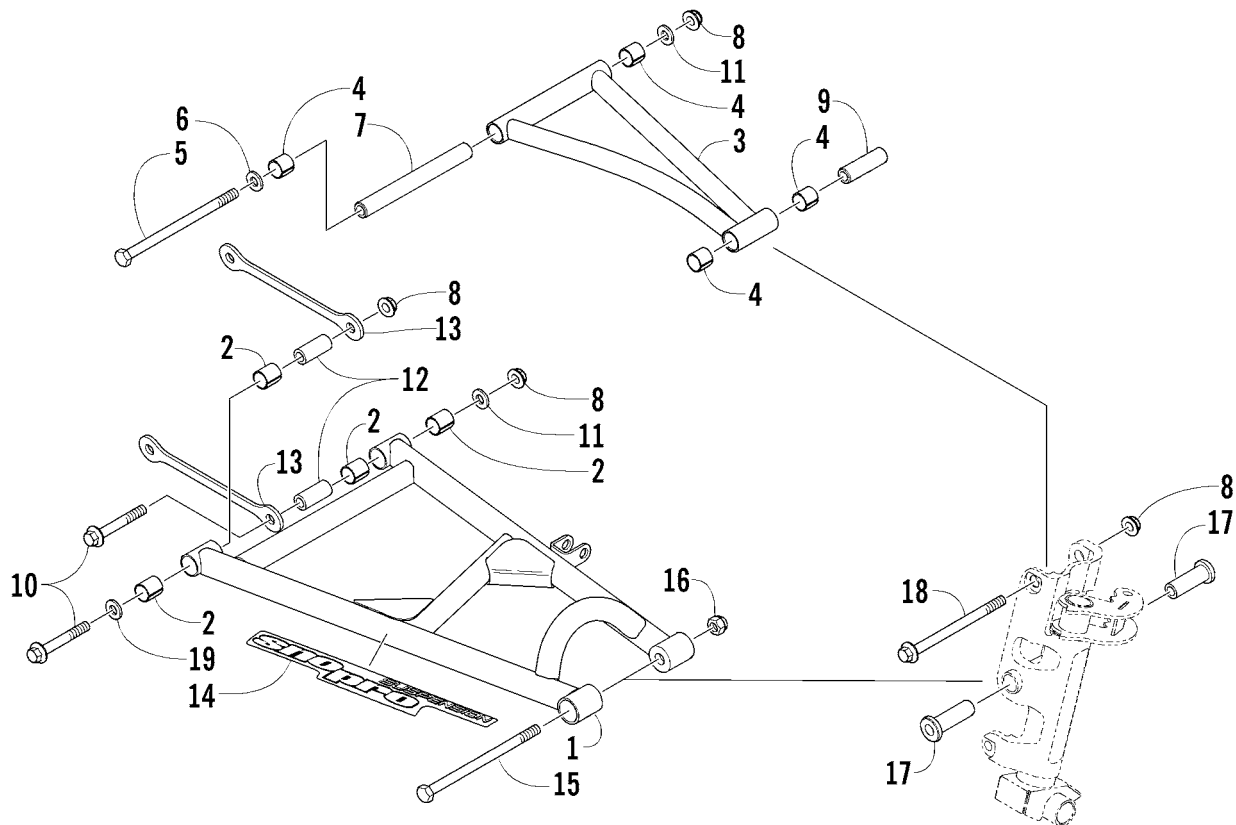
■ **NOTE:** The illustrations used in this Parts Manual are for reference to replacement part numbers only and are not to be used for assembly. For assembly procedures, use an Arctic Cat Service Manual. Underlined part numbers are new for the 2005 model year.



## SKI AND SPINDLE ASSEMBLY

0740-142

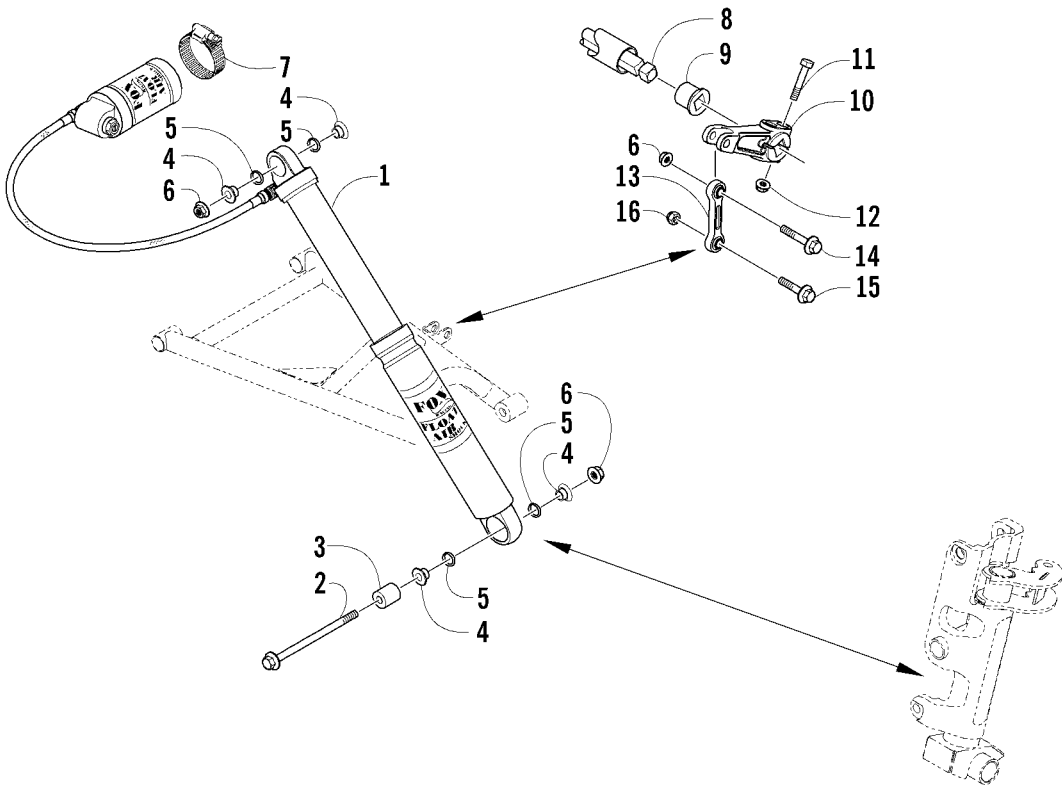
Ref.	Part No.	Qty.	Description	Ref.	Part No.	Qty.	Description
1	<u>2603-590</u>	2	Ski	12	0603-034	2	Axle, Spindle
2	<u>2603-589</u>	2	Handle, Plastic - Black	13	<u>0702-747</u>	2	Spring, Return
3	0623-928	4	Nut, Hex	14	<u>6611-630</u>	1	Decal, "AWS" - Spindle - Right
4	0623-927	8	Washer, Flat		<u>6611-631</u>	1	Decal, "AWS" - Spindle - Left
5	<u>1623-455</u>	2	Screw, Cap	15	0623-831	2	Cap, Spindle
6	0623-925	2	Screw, Cap	16	1603-960	2	Damper, Ski
7	<u>1703-808</u>	1	Spindle, Steering - Right - Green (inc. 8-11)	17	<u>1703-875</u>	2	Plate, Damper
	<u>1703-809</u>	1	Spindle, Steering - Left - Green (inc. 8-11)	18	<u>1623-433</u>	1	Kit, Hardware (inc. 19-22)
8	<u>2603-481</u>	4	● Bearing	19	<u>1623-434</u>	2	● Screw, Cap
9	0603-083	4	● Bearing	20	0623-929	4	● Washer, Flat
10	1623-010	2	● Fitting, Grease	21	<u>8040-545</u>	2	● Nut, Hex
11	0603-647	4	● Insert, Spindle	22	1603-513	4	● Insert, Ski Saddle



## A-ARM ASSEMBLY

0740-181

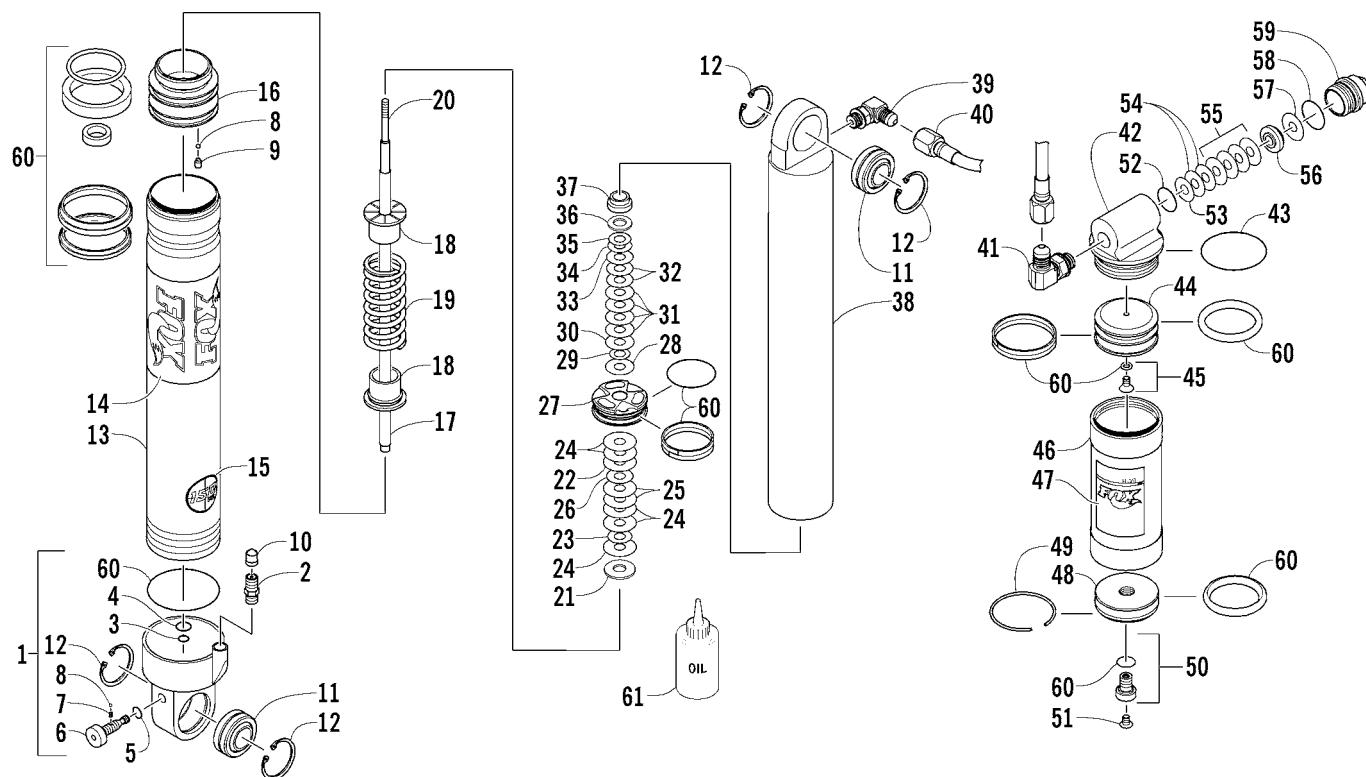
Ref.	Part No.	Qty.	Description	Ref.	Part No.	Qty.	Description
1	1703-546	1	A-Arm, Lower - Right - Green (inc. 2)	10	<u>1623-403</u>	4	Screw, Cap
	1703-547	1	A-Arm, Lower - Left - Green (inc. 2)	11	0623-044	4	Washer
2	1603-895	8	● Bearing	12	2603-305	4	Axle, Inner - Lower Arm
3	1703-542	2	A-Arm, Upper - Green (inc. 4)	13	2606-886	2	Brace, Lower A-Arm
4	0603-083	8	● Bearing	14	<u>6611-634</u>	2	Decal, Lower A-Arm
5	0623-952	2	Screw, Cap	15	1623-009	2	Screw, Cap
6	<u>1623-415</u>	2	Washer	16	8040-546	2	Nut, Lock
7	1603-563	2	Axle, Inner - Upper Arm	17	1603-616	4	Axle, Powder Metal
8	<u>8047-486</u>	8	Nut, Lock	18	8026-232	2	Screw, Cap
9	0603-864	2	Tube, Axle	19	8050-282	2	Washer, Flat



SHOCK ABSORBER AND SWAY BAR ASSEMBLY

0740-180 \*Not Illustrated

Ref.	Part No.	Qty.	Description	Ref.	Part No.	Qty.	Description
1	1703-790	1	Shock, Ski - Right	9	1603-211	2	Bearing
	1703-791	1	Shock, Ski - Left	10	0603-917	2	Arm, Sway Bar
2	8020-232	2	Screw, Cap	11	8002-136	4	Screw, Cap
3	2603-485	2	Spacer, Shock Mount	12	8048-426	4	Nut, Lock
4	1603-423	8	Spacer	13	1603-414	2	Link, Sway Bar
5	2604-698	8	O-Ring	14	8020-226	2	Screw, Cap
6	8047-486	6	Nut, Lock	15	8020-224	2	Screw, Cap
7	0214-025	2	Clamp, Hose	16	8041-486	2	Nut, Lock
8	1703-827	1	Sway Bar - 0.313 in.	*	2603-324	1	Pump, Air-Shock

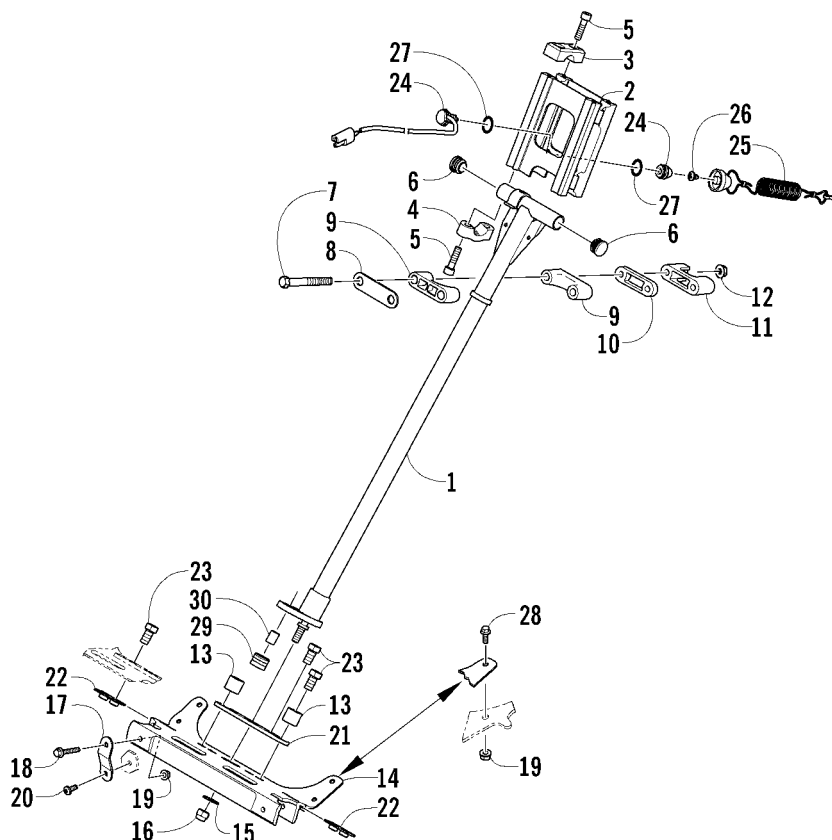


## FRONT SUSPENSION SHOCK ABSORBER

(Complete Shock Absorber p/n 1703-790 Right; p/n 1703-791 Left)

0740-185

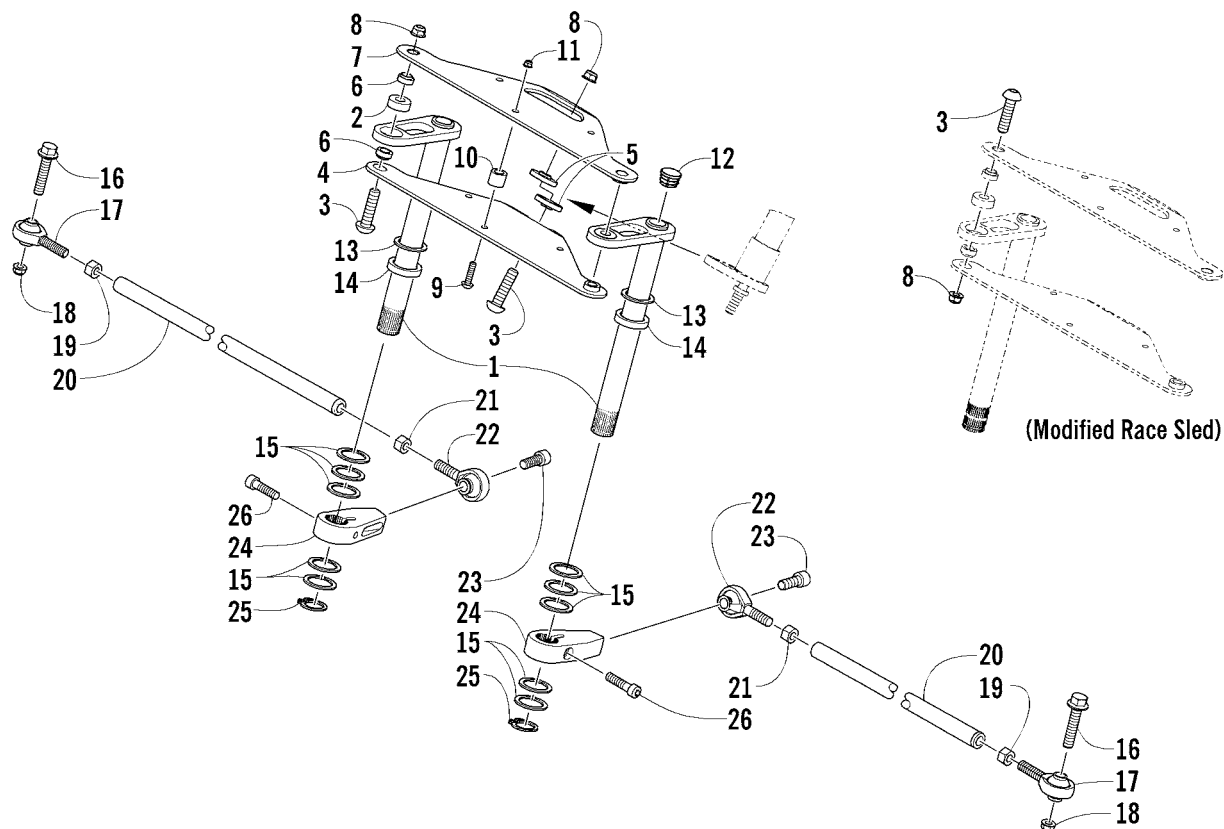
Ref.	Part No.	Qty.	Description	Ref.	Part No.	Qty.	Description
1	<u>2603-512</u>	1	Cap, Air Sleeve - Right (inc. 2-7 and one No. 8)	31	0603-888	4	Valve, Shock 1.100 x 0.015 in.
	<u>2603-513</u>	1	Cap, Air Sleeve - Left (inc. 2-7 and one No. 8)	32	0603-887	2	Valve, Shock 1.000 x 0.015 in.
2	2603-326	1	● Valve, Air	33	0603-341	1	Valve, Shock 1.000 x 0.010 in.
3	<u>2603-506</u>	1	● O-Ring	34	0603-338	1	Valve, Shock 0.900 x 0.010 in.
4	1604-318	1	● O-Ring	35	0603-335	1	Valve, Shock 0.800 x 0.010 in.
5	<u>2603-503</u>	1	● O-Ring	36	0603-389	1	Washer, Backup
6	<u>2603-514</u>	1	● Knob, Damping Adjust	37	0603-301	1	Nut, Cap
7	<u>2603-529</u>	1	● Spring, Rebound	38	<u>2603-508</u>	1	Body, Shock
8	1604-315	2	● Ball, Bleed	39	<u>2604-950</u>	1	Fitting, Elbow
9	1603-940	1	Screw	40	<u>2603-505</u>	1	Hose, Swivel
10	2603-327	1	Cap, Valve	41	<u>2604-943</u>	1	Fitting, Elbow
11	1604-664	2	Bearing, Spherical	42	<u>2603-528</u>	1	Housing, Damping Adjust
12	2604-714	4	Ring, Snap	43	<u>2603-504</u>	1	O-Ring
13	<u>2603-411</u>	1	Sleeve, Shock - Assembly	44	<u>2604-969</u>	1	Piston, Internal Floating - Assembly
14	<u>2603-509</u>	1	Decal, Shock	45	1604-316	1	Screw, Relief w/O-Ring
15	<u>2603-510</u>	1	Decal, Maximum Pressure Warning	46	<u>2603-515</u>	1	Reservoir
16	<u>2603-524</u>	1	Bearing - Assembly	47	<u>2603-584</u>	1	Decal, Shock - Reservoir
17	<u>2603-523</u>	1	Shaft, Shock - Assembly	48	<u>2603-525</u>	1	End Cap, Shock - Assembly
18	<u>2603-522</u>	2	Guide, Spring	49	0604-992	1	Ring, Retaining
19	<u>2603-507</u>	1	Spring	50	0703-341	1	Valve, Pressure
20	<u>2603-516</u>	1	Rod, Damping Adjust	51	0624-097	1	Screw, Machine
21	0603-540	1	Washer, Top Out	52	0603-975	1	O-Ring
22	0603-348	1	Valve, Shock 1.300 x 0.006 in.	53	<u>2603-499</u>	1	Valve, Shock 0.500 x 0.006 in.
23	0603-337	1	Valve, Shock 0.900 x 0.008 in.	54	<u>2603-500</u>	2	Valve, Shock 0.600 x 0.010 in.
24	0603-349	5	Valve, Shock 1.300 x 0.008 in.	55	<u>2603-501</u>	4	Valve, Shock 0.700 x 0.010 in.
25	0603-350	2	Valve, Shock 1.300 x 0.010 in.	56	<u>2603-526</u>	1	Piston, Damping
26	0603-893	1	Valve, Shock 1.000 x 0.004 in.	57	0603-331	1	Valve, Shock 0.700 x 0.008 in.
27	<u>2603-531</u>	1	Piston, Damping	58	<u>2603-502</u>	1	O-Ring
28	0603-343	1	Valve, Shock 1.100 x 0.008 in.	59	<u>2603-527</u>	1	Cartridge, Damping Adjust
29	0603-332	1	Valve, Shock 0.700 x 0.010 in.	60	<u>2603-498</u>	1	Rebuild Kit
30	0603-344	1	Valve, Shock 1.100 x 0.010 in.	61	2639-905	AR	Oil, Gas Shock - 6 qt Case



## STEERING POST ASSEMBLY

0740-162 \*Optional

Ref.	Part No.	Qty.	Description	Ref.	Part No.	Qty.	Description
1	<u>1705-061</u>	1	Post, Steering	16	0623-025	1	Nut, Lock
2	<u>0605-779</u>	1	Riser, Handlebar - 4.4 in.	17	<u>0607-860</u>	2	Support, Strap
	<u>0605-838</u>	1	Riser, Handlebar - 5.4 in.*	18	8020-049	2	Screw, Cap
3	0705-355	2	Cap, Adjusting Block - Upper	19	8047-366	4	Nut, Lock
4	0605-676	2	Cap, Adjusting Block - Lower	20	1623-022	2	Screw, Self-Tapping
5	0623-872	8	Screw, Cap	21	<u>1705-097</u>	1	Plate, Mounting - Steering Post
6	1606-079	2	Plug, Hole	22	0605-787	2	Plate, Nut - Steering Support
7	<u>1623-397</u>	2	Screw, Cap	23	1623-396	4	Screw, Cap
8	0605-722	1	Plate, Retaining	24	0709-072	1	Tether Switch Assembly (inc. 25-26)
9	0605-576	2	Block, Mounting - Steering Post	25	0709-055	1	● Tether Assembly (inc. 26)
10	<u>1705-115</u>	1	Plate, Adjustment Block	26	0623-338	1	●● Screw, Self-Tapping
11	<u>1705-069</u>	1	Block, Adjustment	27	0123-985	2	Washer, Lock - Internal Tooth
12	8047-426	2	Nut, Lock	28	8020-039	2	Screw, Cap
13	<u>1705-088</u>	2	Stop, Steering Post	29	<u>1705-110</u>	1	Housing w/Bearing
14	<u>0607-844</u>	1	Support, Steering - Machined	30	<u>0605-816</u>	1	Axle, Bearing Housing
15	0623-985	1	Washer				

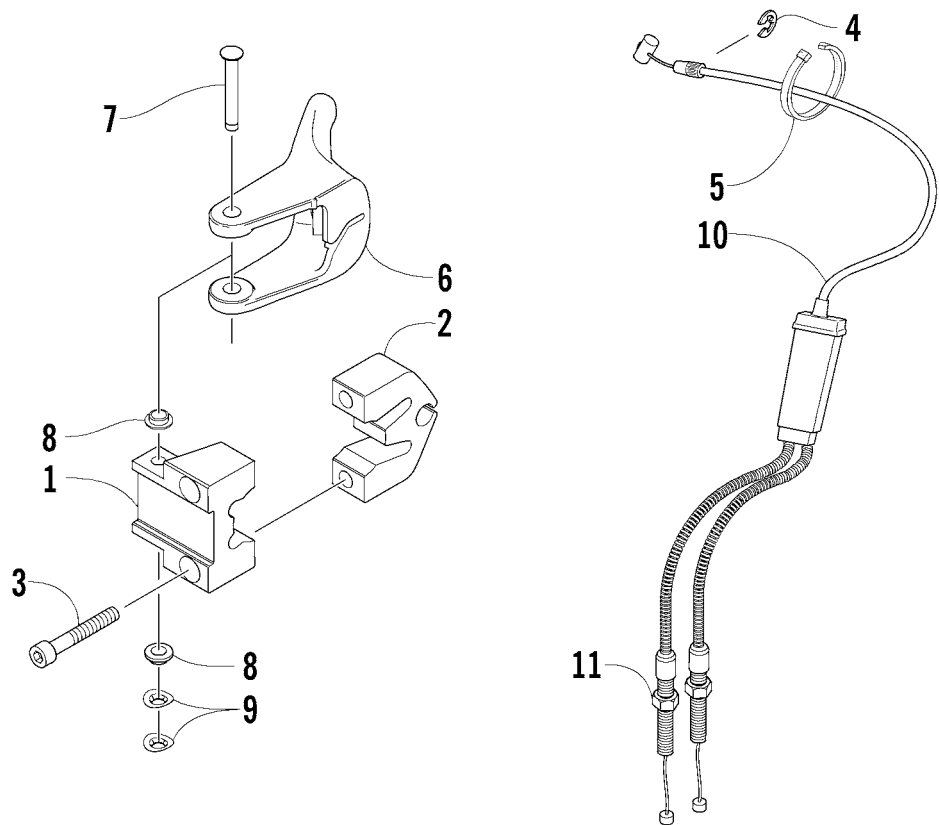


## TIE ROD ASSEMBLY

0740-164

Ref.	Part No.	Qty.	Description	Ref.	Part No.	Qty.	Description
1	<u>1705-086</u>	2	Shaft, Steering (inc. 2)	13	0623-954	2	Washer, Thrust
2	<u>0605-807</u>	2	● Bearing	14	<u>0605-806</u>	2	Spacer
3	<u>1623-400</u>	3	Screw, Cap	15	0623-955	10	Washer, Thrust
4	<u>1705-083</u>	1	Link, Steering - Bottom (inc. one No. 5 and two No. 6)	16	8020-226	2	Screw, Cap
5	<u>0605-808</u>	2	● Insert, Steering	17	<u>0605-788</u>	2	Rod, End - Right
6	<u>0605-803</u>	4	● Insert, Steering	18	8047-486	2	Nut, Lock
7	<u>1705-082</u>	1	Link, Steering - Top (inc. one No. 5 and two No. 6)	19	0123-917	2	Nut, Hex - Left
8	8047-486	3	Nut, Lock	20	<u>0605-798</u>	2	Tube, Tie Rod - Spindle
9	1623-365	3	Screw, Machine	21	0623-294	2	Nut, Hex - Right
10	<u>0605-804</u>	3	Spacer	22	<u>0605-607</u>	2	Ball Joint, Left
11	8047-366	3	Nut, Lock	23	<u>1623-394</u>	2	Screw, Cap
12	0606-654	2	Plug	24	<u>0605-785</u>	2	Arm, Shaft
				25	0623-956	2	Snap Ring
				26	8005-584	2	Screw, Cap

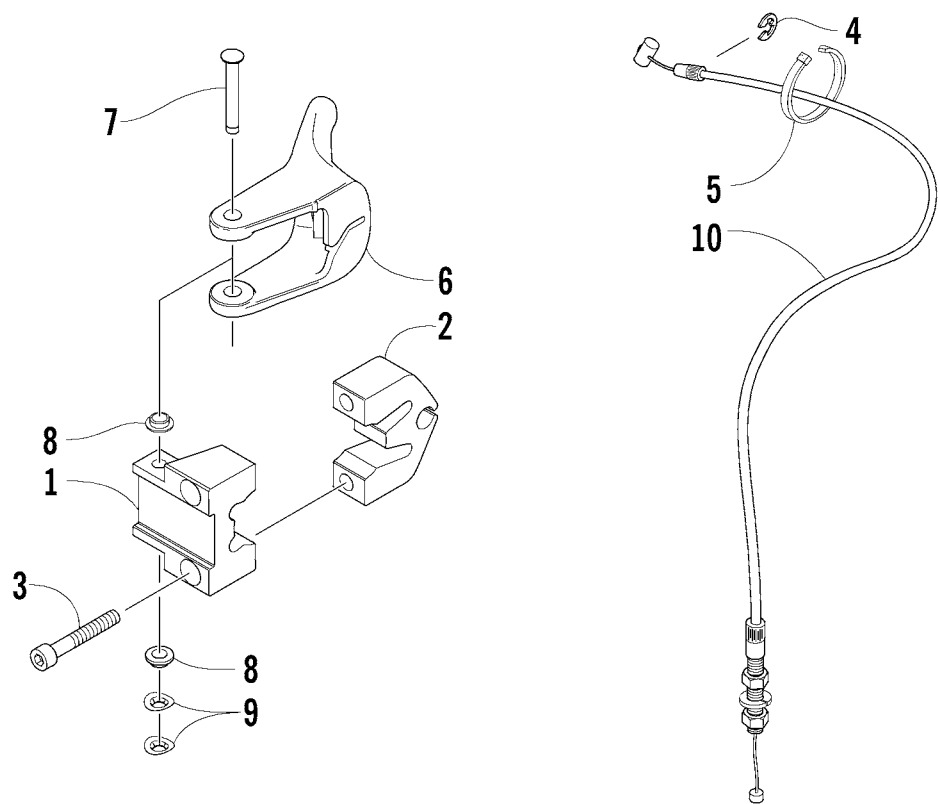




CONTROL ASSEMBLY

0740-220

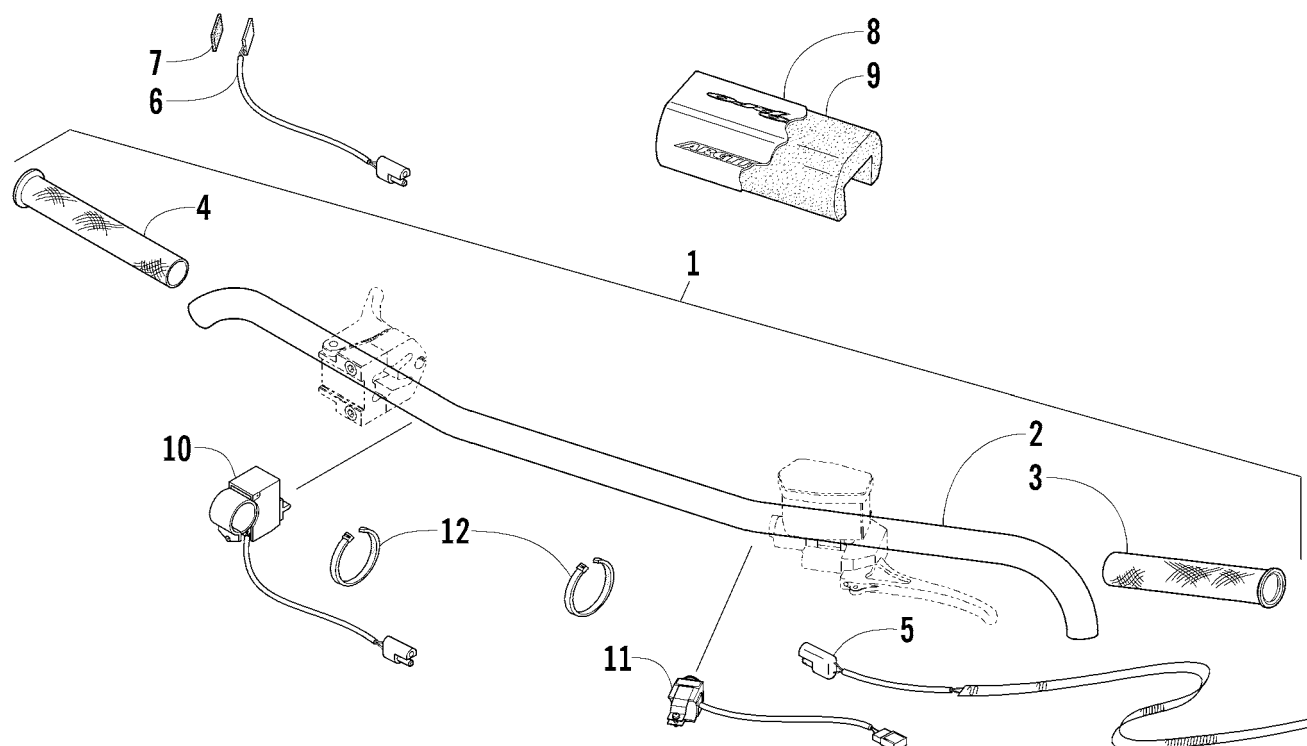
Ref.	Part No.	Qty.	Description	Ref.	Part No.	Qty.	Description
1	0605-383	1	Block, Mounting - Throttle Lever - Front	7	0609-317	1	Axle, Lever - Throttle
2	0605-384	1	Block, Mounting - Throttle Lever - Rear	8	0609-038	2	Seal, Throttle Lever
3	8005-494	2	Screw, Cap	9	0623-773	2	Nut, Push
4	0123-231	1	Ring, Retaining	10	<del>0687-191</del>	1	Cable, Throttle (inc. 11)
5	0123-788	AR	Cable Tie - 8 in.	11	0623-464	2	● Nut, Locking - Throttle Cable
6	0609-481	1	Lever, Throttle				



CONTROL ASSEMBLY (Modified Race Sled)

0740-221

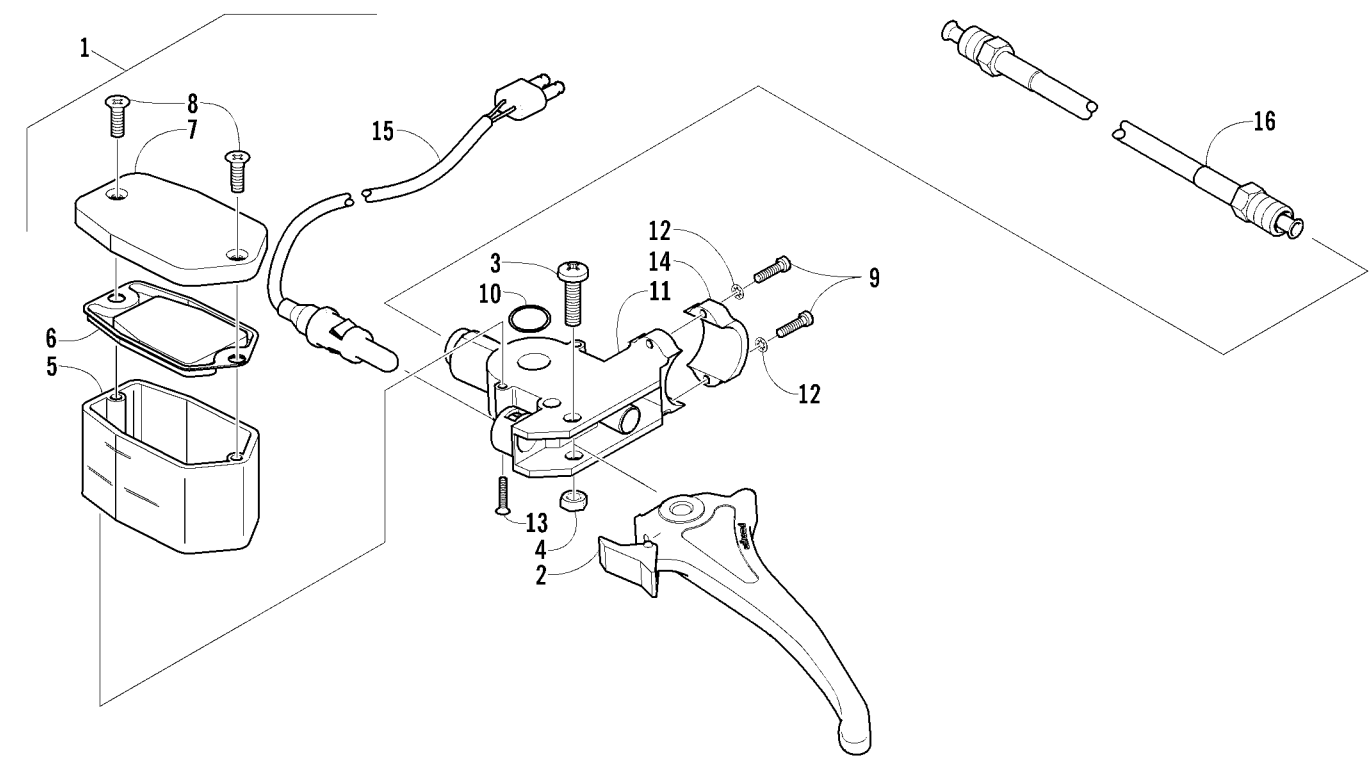
Ref.	Part No.	Qty.	Description	Ref.	Part No.	Qty.	Description
1	0605-383	1	Block, Mounting - Throttle Lever - Front	6	0609-481	1	Lever, Throttle
2	0605-384	1	Block, Mounting - Throttle Lever - Rear	7	0609-317	1	Axle, Lever - Throttle
3	8005-494	2	Screw, Cap	8	0609-038	2	Seal, Throttle Lever
4	0123-231	1	Ring, Retaining	9	0623-773	2	Nut, Push
5	0123-788	AR	Cable Tie - 8 in.	10	0687-190	1	Cable, Throttle



## HANDLEBAR ASSEMBLY

0739-077

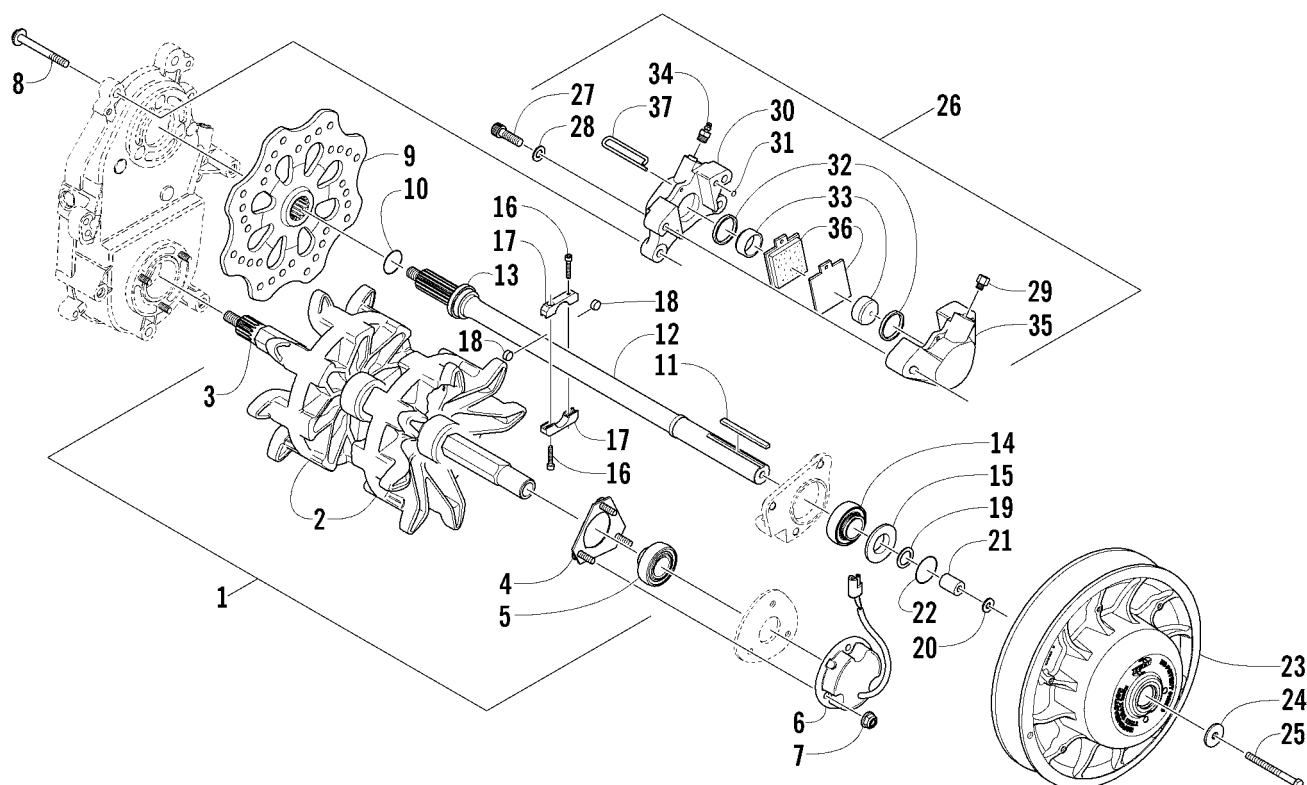
Ref.	Part No.	Qty.	Description	Ref.	Part No.	Qty.	Description
1	1705-042	1	Handlebar Assembly (inc. 2-5)	7	0617-248	1	Pad, Insulator
2	0705-978	1	● Handlebar	8	<del>1705-056</del>	1	Wrap, Handlebar Pad
3	2606-400	1	● Grip, Handlebar - Left	9	0619-926	1	Foam, Handlebar Pad
4	1606-442	1	● Grip, Handlebar - Right	10	0609-471	1	Switch, Stop
5	0609-644	1	● Element, Handwarmer - Right	11	0609-643	1	Switch, Timing
	0609-645	1	● Element, Handwarmer - Left	12	0123-788	AR	Cable Tie - 7 in.
6	0609-646	1	Element, Thumbwarmer				



HYDRAULIC BRAKE CONTROL ASSEMBLY

0739-256 \*Not a Service Part \*\*Not Illustrated

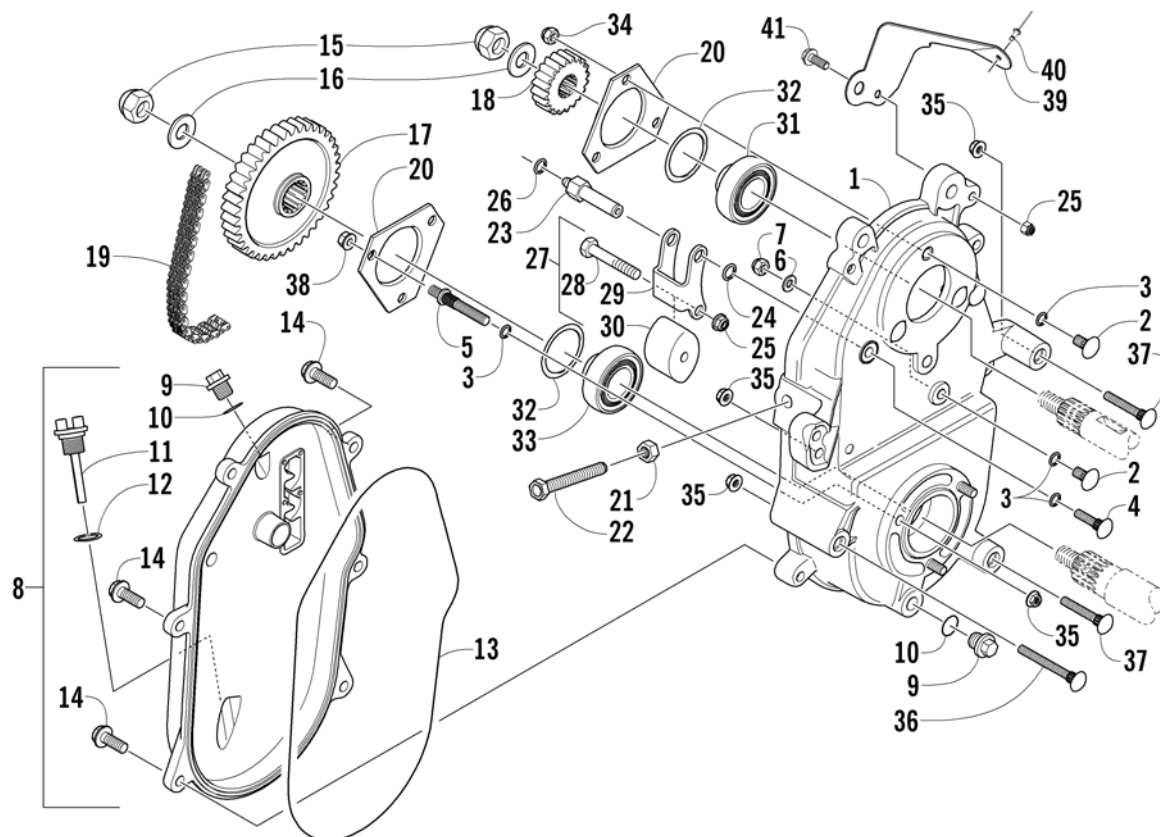
Ref.	Part No.	Qty.	Description	Ref.	Part No.	Qty.	Description
1	0602-943	1	Brake Assembly (inc. 2-14)	10	0602-587	1	● O-Ring
2	1602-740	1	● Lever, Brake	11	*	1	● Master Cylinder
3	0623-430	1	● Screw, Lever Mounting	12	8052-212	2	● Washer, Lock - Internal Tooth
4	0623-056	1	● Nut, Lock	13	0623-432	2	● Screw, Master Cylinder Mounting
5	0602-740	1	● Reservoir	14	0602-907	1	● Clamp, Master Cylinder
6	0602-741	1	● Gasket, Cover	**	0638-315	AR	Fluid, Brake - High Temperature
7	0602-742	1	● Cover, Reservoir	15	0609-648	1	Switch, Taillight
8	0623-506	2	● Screw, Cover	16	1602-488	1	Brakeline, Hydraulic
9	0623-613	2	● Screw, Machine				



## DRIVE TRAIN SHAFTS AND BRAKE ASSEMBLIES

0740-171 \*Not a Service Part

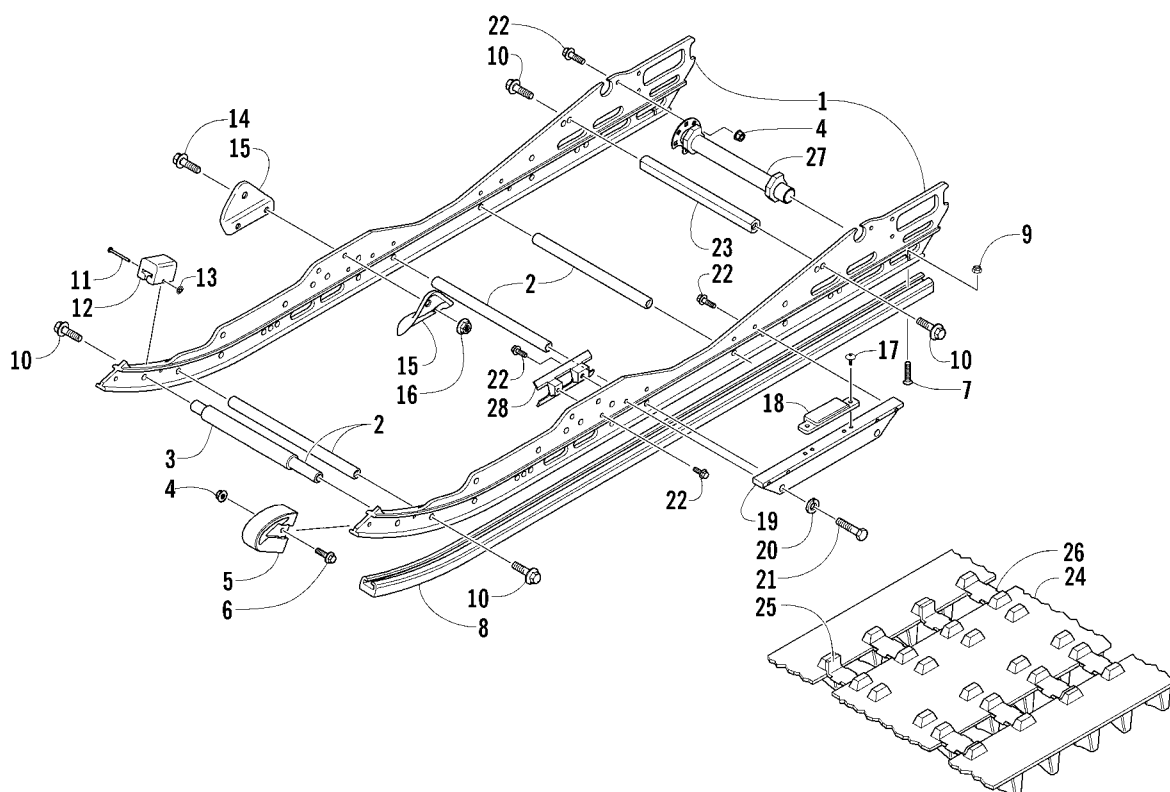
Ref.	Part No.	Qty.	Description	Ref.	Part No.	Qty.	Description
1	0728-118	1	Track Drive Assembly (inc. 2-5)	21	0648-709	1	Shaft, Stub
2	1602-727	2	● Sprocket, Drive	22	0616-032	1	O-Ring
3	1602-530	1	● Driveshaft	23	<u>0726-197</u>	1	Clutch, Driven
4	0702-412	1	● Plate, Flange		<u>0726-210</u>	1	Clutch, Driven (Modified Race Sled)
5	1602-601	1	● Bearing, 1 in. w/o Lock Collar	24	0123-019	1	Washer
6	0630-180	1	Regulator, Voltage	25	8002-138	1	Screw, Cap
7	8047-426	3	Nut, Lock	26	1602-639	1	Caliper, Brake - Assembly (inc. 27-37)
8	8020-315	2	Screw, Cap	27	8005-679	2	● Screw, Cap
9	<u>1602-795</u>	1	Disc, Brake	28	8050-272	2	● Washer
10	1602-199	1	O-Ring	29	0602-590	1	● Fitting, Adapter
11	1602-812	1	Key	30	*	1	● Housing
12	<u>0702-771</u>	1	Shaft, Driven (inc. 13-15)	31	0602-729	1	● O-Ring, Housing
13	1602-114	1	● Collar, Hub - Brake Disc	32	0602-583	2	● O-Ring
14	1602-233	1	● Bearing, 1 in. w/o Lock Collar	33	0602-708	2	● Piston
15	1602-367	1	● Spacer	34	0602-707	1	● Screw, Bleed - Assembly
16	8005-402	2	Screw, Cap	35	*	1	● Housing
17	3606-581	2	Bracket, Speed Sensor	36	0702-229	1	● Pad, Brake - Set (inc. 37)
18	0630-167	2	Magnet, Disc	37	0602-706	1	● Pin, Retaining
19	0623-118	1	Washer**				
	0623-119	1	Washer**				
20	0123-053	1	Washer**				
							**Production standard setting use for alignment as required.



## DRIVE/DROPCASE ASSEMBLY

0740-173

Ref.	Part No.	Qty.	Description	Ref.	Part No.	Qty.	Description
1	0702-628	1	Dropcase w/Studs (inc. 2-7)	22	0602-638	1	Screw, Chain Roller
2	0123-523	4	● Bolt, Ribbed	23	<u>1602-864</u>	1	Pivot, Tensioner
3	0607-025	9	● O-Ring, Stud	24	<u>1602-855</u>	1	O-Ring
4	0623-117	2	● Bolt, Ribbed	25	8047-366	3	Nut, Lock
5	0623-317	3	● Stud	26	1602-322	1	O-Ring
6	0623-094	1	● Washer	27	<u>0702-715</u>	1	Adjuster, Chain - Assembly (inc. 28-30 and one No. 25)
7	8042-426	1	● Nut, Lock	28	8002-046	1	● Screw, Cap
8	<u>7998-488</u>	1	Cover, Dropcase - Assembly (inc. one No. 9-10)	29	<u>0605-812</u>	1	● Bracket, Chain Roller
9	0623-293	2	● Plug, Dropcase	30	0107-411	1	● Pad, Tightener
10	1602-213	2	● O-Ring	31	1602-051	1	Bearing, 1 in.
11	0602-462	1	Stick, Oil Level	32	0107-003	2	Seal, O-Ring
12	0670-183	1	O-Ring, Oil Level Stick	33	1602-601	1	Bearing, 1 1/16 in.
13	0602-437	1	Seal, Dropcase	34	8041-426	3	Nut, Lock
14	8020-133	6	Screw, Cap	35	8047-426	7	Nut, Lock
15	0623-465	2	Nut, Lock	36	1623-121	1	Bolt, Carriage
16	0623-231	2	Washer, Spring	37	8011-139	2	Bolt, Carriage
17	<u>1602-804</u>	1	Sprocket - 46T (17 Wide)	38	8048-426	3	Nut, Lock
18	<u>1602-735</u>	1	Sprocket - 20T (17 Wide)	39	<u>4606-015</u>	1	Support, Console
19	<u>1602-806</u>	1	Chain - 74P (17 Wide)	40	1623-130	1	Rivet
20	<u>1602-521</u>	2	Plate, Flange	41	8020-044	1	Screw, Cap
21	0123-150	1	Nut				

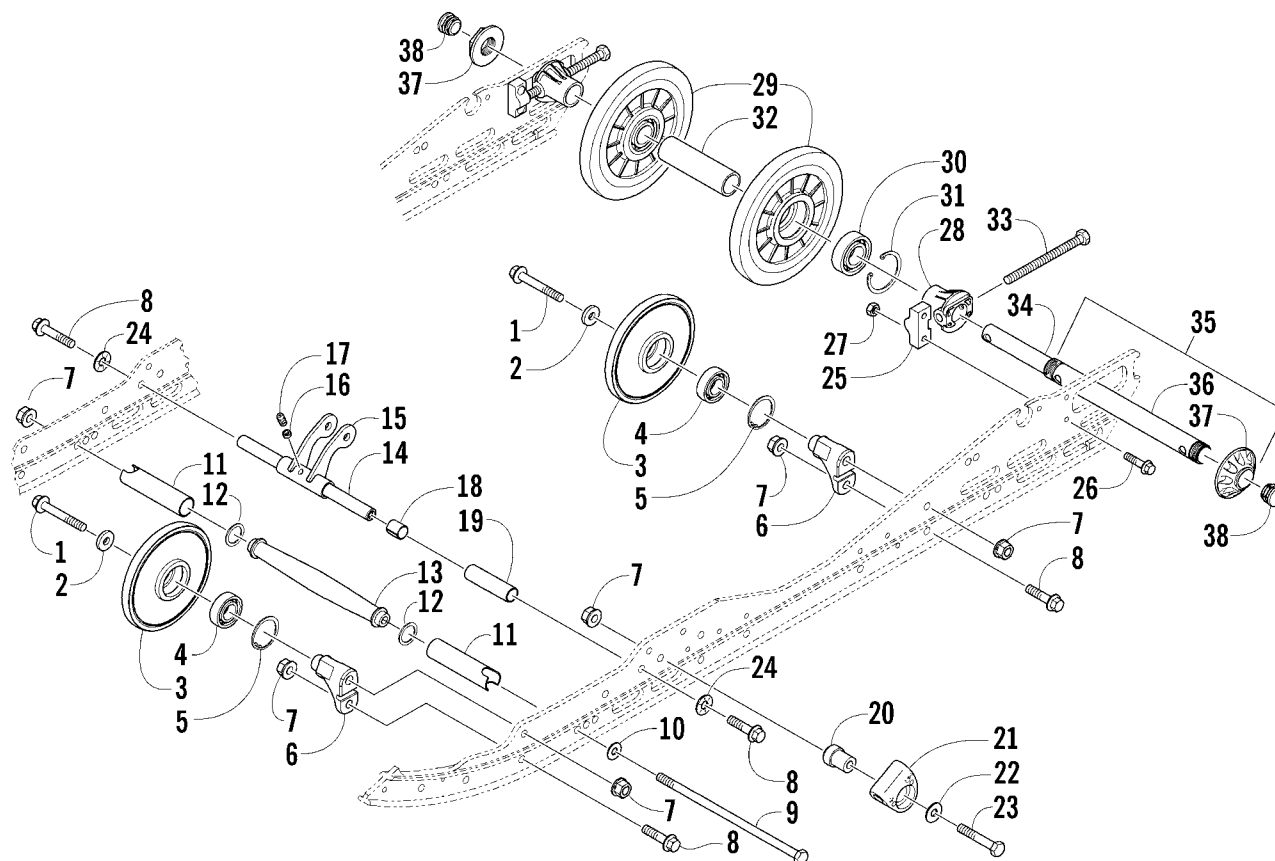


## SLIDE RAIL AND TRACK ASSEMBLY

(Complete Skid Frame Assembly p/n 7998-432)

0740-174

Ref.	Part No.	Qty.	Description	Ref.	Part No.	Qty.	Description
1	<u>2604-900</u>	2	Rail, Formed	15	2604-593	4	Bracket, Mounting - Front Arm
2	0604-930	4	Axle, Inner	16	8047-426	4	Nut, Lock
3	<u>2604-905</u>	1	Spacer	17	<u>1623-404</u>	4	Screw, Machine
4	8047-366	3	Nut, Lock	18	2604-656	2	Pad, Shock
5	<u>2604-724</u>	2	End Cap, Slide Rail	19	<u>2604-910</u>	2	Brace, Rail
6	8020-041	2	Screw, Cap	20	8051-277	4	Washer, Lock
7	0123-859	2	Screw, Machine	21	8002-226	4	Screw, Cap
8	<u>2604-974</u>	2	Wearstrip, Slide Rail - Black	22	8020-040	10	Screw, Cap
9	8041-366	2	Nut, Lock	23	2604-259	1	Crossbrace, Rear Arm
10	8020-224	6	Screw, Cap	24	1602-602	1	Track Assembly (inc. 25-26)
11	0123-767	2	Rivet	25	<u>1602-907</u>	44	● Clip, Guide
12	<u>2604-868</u>	2	Pad, Shock	26	<u>1602-906</u>	42	● Clip, Wear
13	0123-766	2	Nut, Push	27	<u>1704-400</u>	1	Block, Coupling
14	8020-131	4	Screw, Cap	28	<u>2604-933</u>	1	Mount, Reservoir

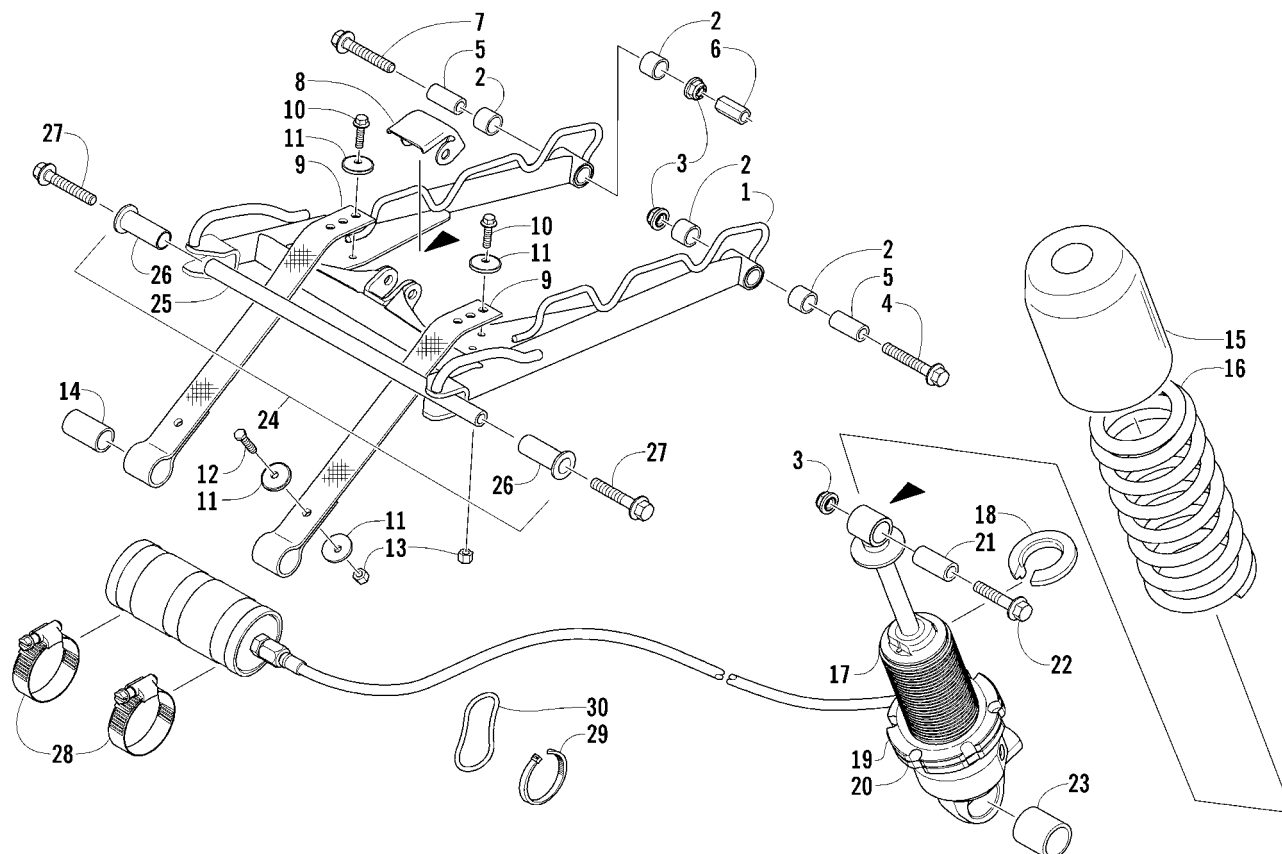


## IDLER WHEEL ASSEMBLY

0740-179 \*Items 1-3, eight No. 7, and four No. 8 are included in the Spare Parts Package.

Ref.	Part No.	Qty.	Description	Ref.	Part No.	Qty.	Description
1	8020-232	4	Screw, Cap*	22	8050-282	2	Washer
2	0623-664	4	Washer*	23	8002-229	2	Screw, Cap
3	1604-837	4	Wheel, Idler (inc. 4-5)*	24	1623-218	2	Washer, Lock
4	1604-847	4	● Bearing, Wheel	25	1704-379	2	Adjuster, Track
5	0623-946	4	● Ring, Retaining	26	8020-042	4	Screw, Cap
6	2604-579	4	Block, Mounting - Idler Wheel	27	8040-366	4	Nut, Hex
7	8047-486	11	Nut, Lock*	28	2604-970	2	Bushing, Adjuster
8	8020-224	6	Screw, Cap*	29	2604-117	2	Wheel, Idler (inc. 30-31)
9	0623-907	1	Screw, Cap	30	0107-598	2	● Bearing
10	0623-044	1	Washer	31	0123-798	2	● Ring, Retaining
11	2604-401	2	Spacer	32	2604-115	1	Spacer
12	1623-117	2	Washer	33	1623-414	2	Screw, Cap
13	2604-867	1	Axle, Steel	34	2604-915	1	Insert, Axle
14	0604-930	1	Axle, Aluminum	35	1704-435	1	Axle, Rear - Left (inc. 36 and one No. 37)**
15	0704-994	1	Pivot, Shock (inc. 16-18)	36	1704-421	1	● Axle, Rear
16	1623-011	1	● Washer, Grease Fitting	37	2604-914	2	● Nut, Axle
17	1623-010	1	● Fitting, Grease	38	0623-831	2	Cap
18	0603-083	2	● Bearing				
19	2604-109	2	Spacer				
20	2604-378	2	Block, Slide				
21	2604-515	2	Slide, Spring				
							** See Operator's Manual Track Tension/Alignment for information on rear axle procedure.





## REAR SUSPENSION FRONT ARM ASSEMBLY

0740-170

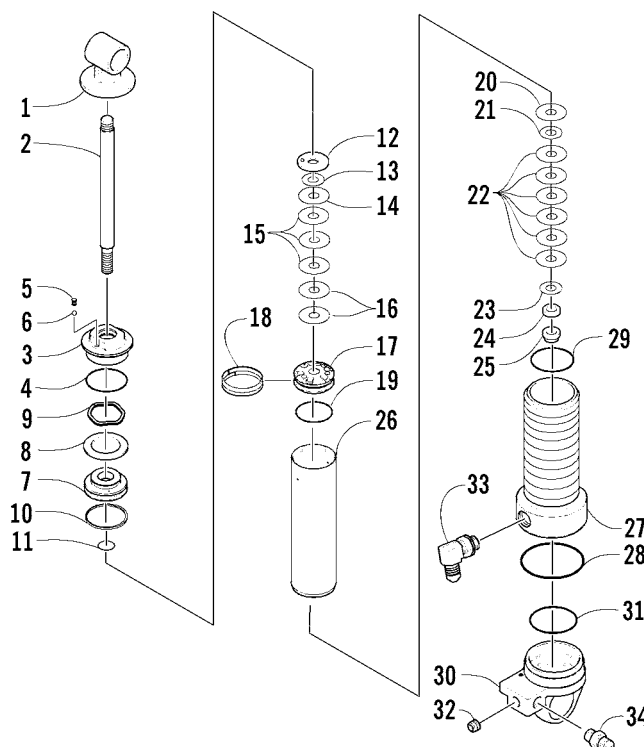
Ref.	Part No.	Qty.	Description	Ref.	Part No.	Qty.	Description
1	<u>1704-365</u>	1	Arm, Front Suspension (inc. 2)	17	<u>1704-349</u>	1	Shock Absorber, Front Arm
2	0604-889	4	● Bushing	18	1603-890	1	Retainer, Spring
3	8047-486	3	Nut, Lock	19	0603-259	1	Nut, Spring Retainer
4	8020-228	1	Screw, Cap	20	0704-798	1	Nut, Retainer - Machined (STD)*
5	0104-629	2	Spacer, Front Arm	21	1603-531	1	Axle, Shock
6	2604-707	1	Stop, Pivot	22	1623-220	1	Screw, Cap
7	8020-229	1	Screw, Cap	23	2604-407	1	Bushing, Shock
8	2604-112	1	Guide, Front Arm - Center	24	<u>1704-380</u>	1	Axle, Front Arm (inc. 25-26)
9	<u>2604-934</u>	2	Strap, Limiter	25	<u>2604-932</u>	1	● Axle, Front Arm
10	8002-041	2	Screw, Cap	26	<u>2604-930</u>	2	● Bushing, Axle
11	0623-875	6	Washer	27	8020-225	2	Screw, Cap
12	8002-043	2	Screw, Cap	28	0214-025	2	Clamp, Reservoir
13	8040-366	4	Nut, Lock	29	0123-788	AR	Cable Tie - 8 in.
14	<u>2604-962</u>	2	Spacer	30	1604-935	1	Support, Hose
15	0604-790	1	Cover, Shock				
16	1604-197	1	Spring, Compression				
	<u>3604-013</u>	1	Spring, Compression - Titanium (Modified Race Sled)				

\* When using the titanium compression spring, Spring Retainer Nut (p/n 0603-259) is required only.



(Complete Rear Suspension Shock Absorber Assembly p/n 1704-348) \*Items available only in Rebuild Kit (p/n 1639-107).

Ref.	Part No.	Qty.	Description	Ref.	Part No.	Qty.	Description
1	<u>1704-350</u>	1	Shock Absorber, Rear Arm	11	1604-316	1	Screw, Relief (inc. 12)
2	<u>2604-967</u>	2	Hose, Straight/Swivel	12	1604-425	1	● O-Ring*
3	<u>1704-349</u>	1	Shock Absorber, Front Arm	13	1603-935	1	Body, Reservoir
4	<u>2604-944</u>	1	Fitting, Adapter - High Flow	14	1603-932	2	Decal, Shock
5	<u>2604-968</u>	1	End Cap, Reservoir Assembly (inc. one No. 6)	15	1603-941	1	End Cap, Reservoir Assembly (inc. 16-17 and one No. 6 and 7)
6	0603-671	2	● O-Ring*	16	0703-341	1	● Valve, Pressure - Assembly (inc. 17)
7	0604-992	2	Retainer, End Cap	17	1604-318	1	●● O-Ring*
8	2604-517	1	Piston, Floating - Assembly (inc. 9)	18	0624-097	1	Screw, Machine
9	1603-236	1	● O-Ring*	19	2639-905	AR	Oil, Shock - 6 qt Case
10	1603-235	1	Strap, Piston*				

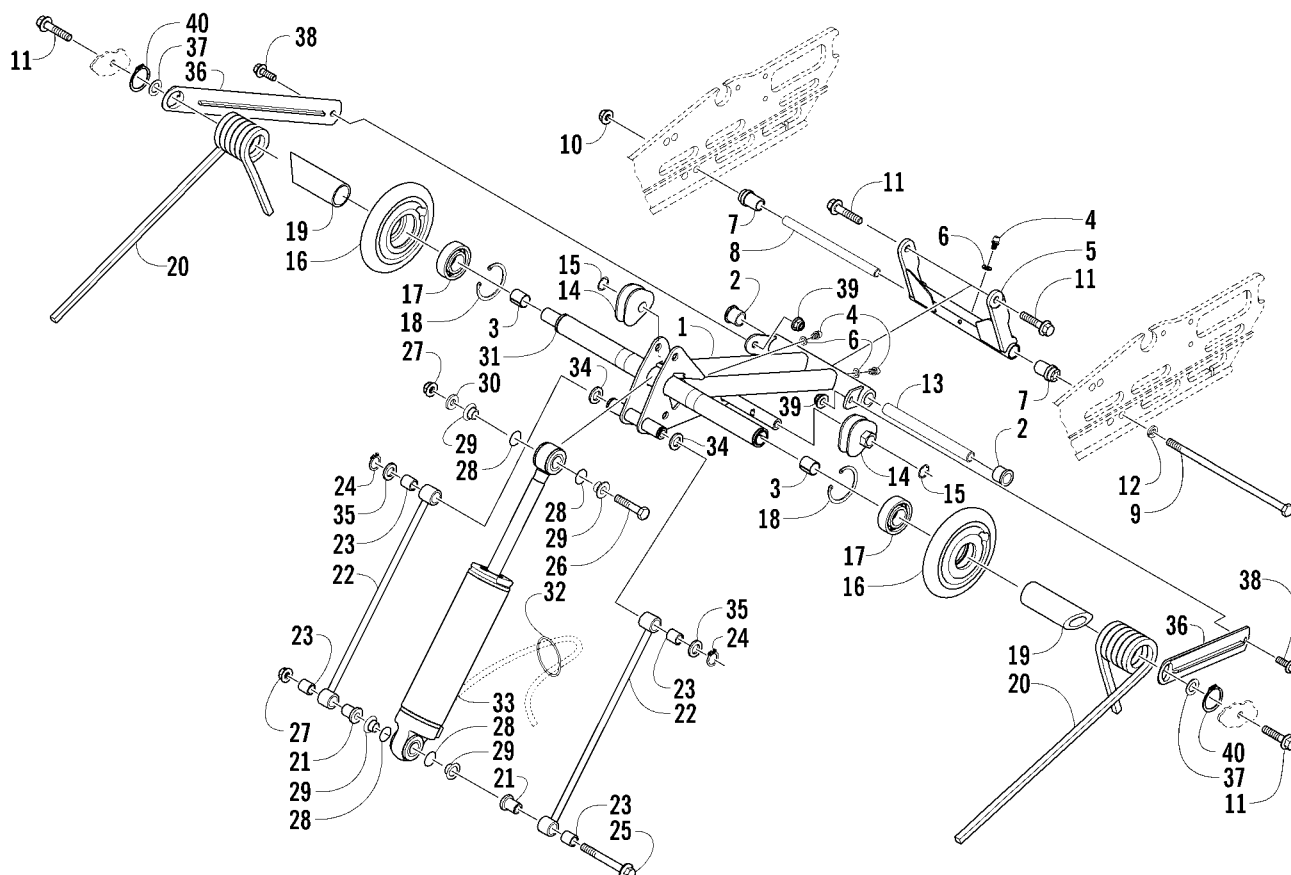


## REAR SUSPENSION FRONT ARM SHOCK ABSORBER

(Complete Shock Absorber p/n 1704-349) \*Items available only in Rebuild Kit (p/n 3639-107).

0740-183

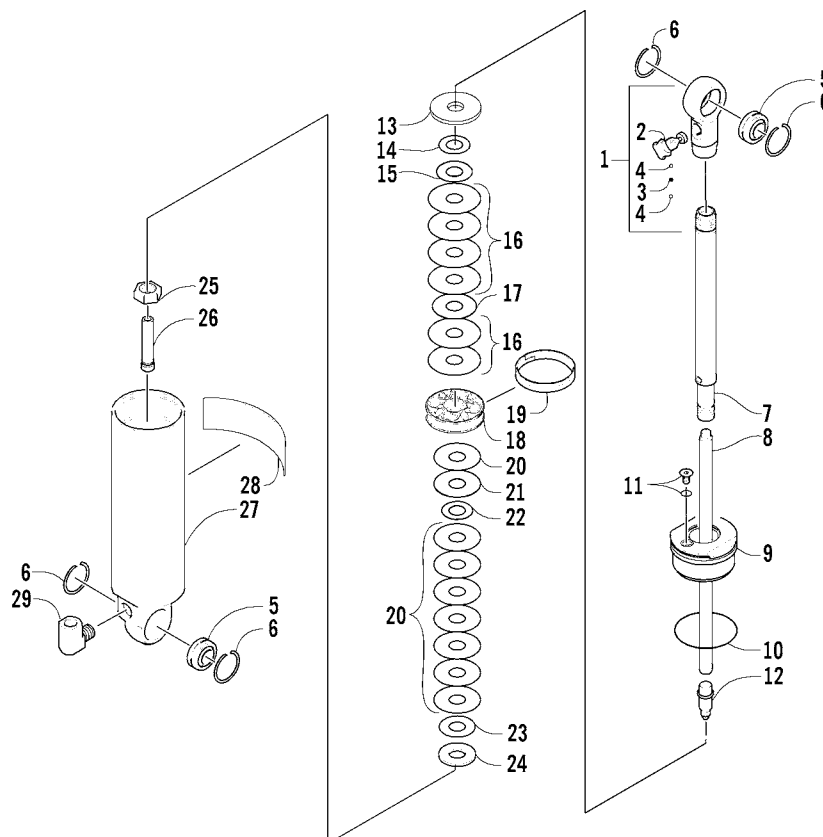
Ref.	Part No.	Qty.	Description	Ref.	Part No.	Qty.	Description
1	0604-625	1	Eyelet, Shock	18	0603-292	1	Strap, Piston - Teflon*
2	2604-529	1	Rod, Shock	19	2604-214	1	O-Ring*
3	2604-568	1	Bearing Assembly (inc. 4)	20	0603-343	1	Valve, Shock 1.100 x 0.008 in.
4	1604-420	1	● O-Ring*	21	0603-331	1	Valve, Shock 0.700 x 0.008 in.
5	1603-940	1	Screw*	22	0603-344	6	Valve, Shock 1.100 x 0.010 in.
6	1604-315	1	Ball, Adjuster*	23	0603-880	1	Valve, Shock 0.900 x 0.012 in.
7	1704-262	1	Piston, Separator (inc. 8-9)	24	<u>2604-966</u>	1	Washer, Top Out
8	2604-669	1	● Washer	25	0603-301	1	Nut, Cap
9	2604-668	1	● Ring, Retaining	26	<u>2604-942</u>	1	Body, Shock
10	0603-447	1	O-Ring*	27	<u>2604-941</u>	1	Sleeve, Adjuster (inc. 28-29)
11	2604-213	1	O-Ring*	28	0604-809	1	● O-Ring
12	0603-540	1	Washer, Top Out	29	0604-810	1	● O-Ring
13	0603-349	1	Valve, Shock 1.300 x 0.008 in.	30	<u>2604-909</u>	1	End Cap, Shock (inc. 31)
14	0603-334	1	Valve, Shock 0.800 x 0.008 in.	31	0603-438	1	● O-Ring
15	0603-891	3	Valve, Shock 1.300 x 0.012 in.	32	2604-207	1	Plug, Brass
16	0603-890	2	Valve, Shock 1.300 x 0.015 in.	33	<u>2604-943</u>	1	Fitting, Elbow
17	<u>2604-965</u>	1	Piston, 0.041 in. - Orifice	34	<u>2604-944</u>	1	Fitting, Straight



## REAR SUSPENSION REAR ARM ASSEMBLY

0740-178 \*Optional

Ref.	Part No.	Qty.	Description	Ref.	Part No.	Qty.	Description
1	<u>1704-371</u>	1	Arm, Idler (inc. 2-3, two No. 4, and two No. 6)	21	2604-531	2	Axle, Link
2	1604-100	2	● Bushing, Flared	22	<u>1704-377</u>	2	Link, Rear Shock (inc. 23)
3	2604-147	2	● Bearing	23	0603-083	4	● Bushing
4	1623-010	3	● Fitting, Grease	24	0623-237	2	Snap Ring
5	<u>1704-368</u>	1	Arm, Rear (inc. one No. 4 and one No. 6)	25	8026-234	1	Screw, Cap
6	1623-011	3	● Washer, Grease Fitting	26	1623-120	1	Screw, Cap
7	1604-307	2	Axle, Serrated	27	8047-486	2	Nut, Lock
8	2604-665	1	Tube, Axle	28	2604-698	4	O-Ring
9	0623-907	1	Screw, Cap	29	1604-662	4	Spacer
10	8040-486	1	Nut, Lock	30	0623-664	1	Washer
11	8020-225	4	Screw, Cap	31	2604-139	1	Axle, Inner Carriage
12	8051-277	1	Washer, Lock	32	1604-935	1	Support, Hose
13	<u>2604-973</u>	1	Axle, Aluminum	33	<u>1704-350</u>	1	Shock Absorber - Rear Arm
14	1604-204	1	Block, Spring Adjuster - Right	34	<u>1623-384</u>	2	Washer, Urethane
15	1604-205	1	Block, Spring Adjuster - Left	35	<u>1623-389</u>	2	Washer, Flat
16	0623-138	2	Ring, Retaining	36	<u>2604-902</u>	2	Brace, Support
17	2604-143	2	Wheel, Idler (inc. 17-18)	37	0623-118	2	Washer, Flat
18	0107-598	2	● Bearing	38	8020-132	2	Screw, Cap
19	0123-798	2	● Ring, Retaining	39	8047-426	2	Nut, Hex
20	<u>2604-931</u>	2	Sleeve, Spring	40	<u>1623-388</u>	2	Ring, Retaining
	<u>1704-382</u>	1	Spring, Suspension - Right - Light				
	<u>1704-383</u>	1	Spring, Suspension - Left - Light				
	<u>1704-384</u>	1	Spring, Suspension - Right - Heavy*				
	<u>1704-385</u>	1	Spring, Suspension - Left - Heavy*				

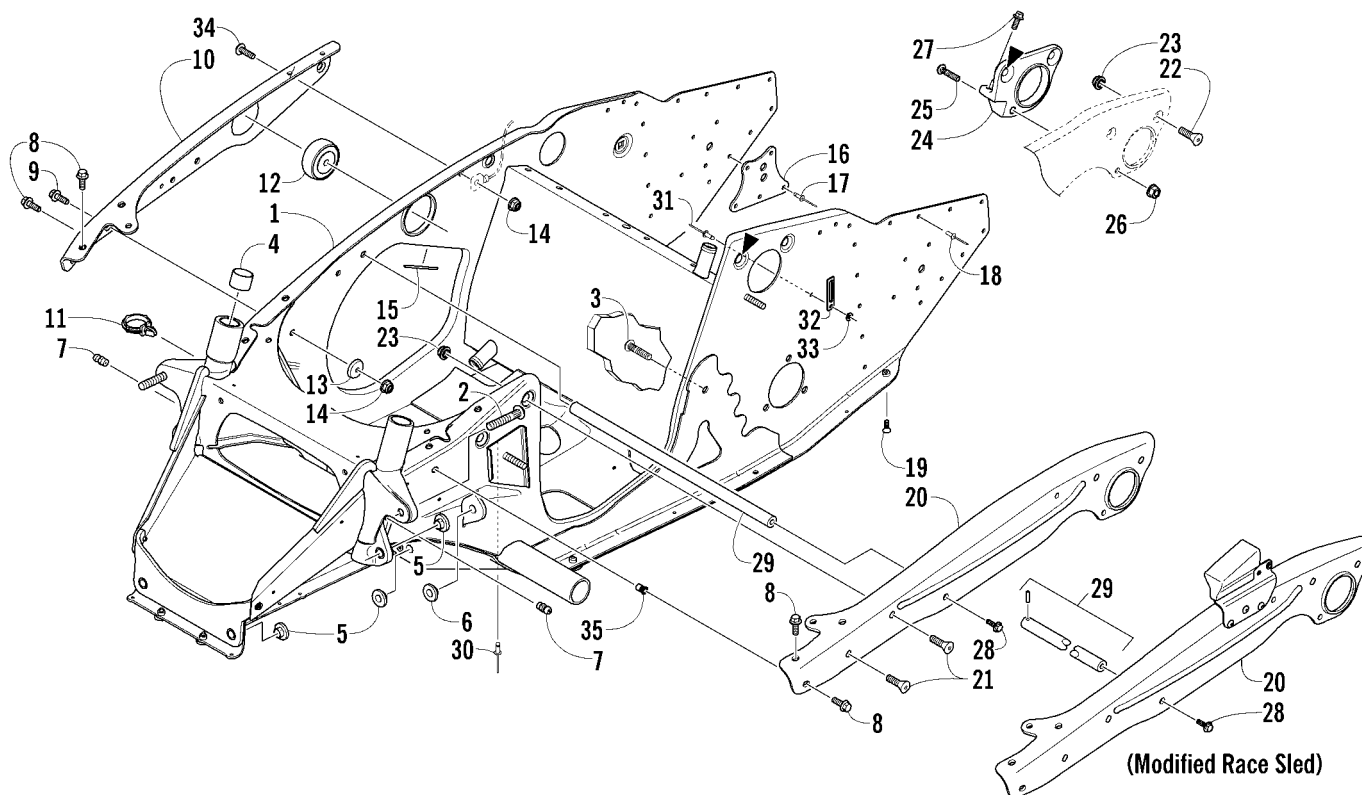


## REAR SUSPENSION REAR ARM SHOCK ABSORBER

(Complete Shock Absorber p/n 1704-350) \*Items available only in Rebuild Kit (p/n 3639-107)

0740-187

Ref.	Part No.	Qty.	Description	Ref.	Part No.	Qty.	Description
1	<u>2604-961</u>	1	Eyelet, Shock - Assembly (inc. 2-4)	16	2604-503	6	Valve, Shock 1.600 x 0.012 in.
2	<u>2604-958</u>	1	● Knob, Damping Adjust	17	2604-490	1	Valve, Shock 1.350 x 0.006 in.
3	<u>2604-960</u>	1	● Spring	18	2604-673	1	Piston, Damping
4	1604-315	2	● Ball, Adjuster	19	2604-628	1	Strap, Piston - Teflon*
5	1604-664	2	Bearing, Shock Eyelet	20	2604-499	8	Valve, Shock 1.425 x 0.015 in.
6	2604-714	4	Ring, Retaining	21	2604-496	1	Valve, Shock 1.425 x 0.008 in.
7	<u>2604-955</u>	1	Shaft, Shock	22	2604-478	1	Valve, Shock 0.950 x 0.006 in.
8	<u>2604-954</u>	1	Rod, Damping Adjust - Assembly	23	2604-488	1	Valve, Shock 1.100 x 0.015 in.
9	<u>2604-956</u>	1	Bearing Assembly (inc. 10)	24	2603-354	1	Washer, Backup
10	0603-671	1	● O-Ring*	25	2604-448	1	Nut
11	2604-530	1	Screw w/O-Ring	26	2604-674	1	Jet, Damping Adjust
12	2604-953	1	Needle, Damping	27	<u>2604-957</u>	1	Body, Shock
13	2604-449	1	Washer, Top Out	28	1603-922	1	Decal, Shock
14	2604-480	1	Valve, Shock 0.950 x 0.010 in.	29	<u>2604-950</u>	1	Fitting, Elbow
15	2604-484	1	Valve, Shock 1.100 x 0.006 in.				



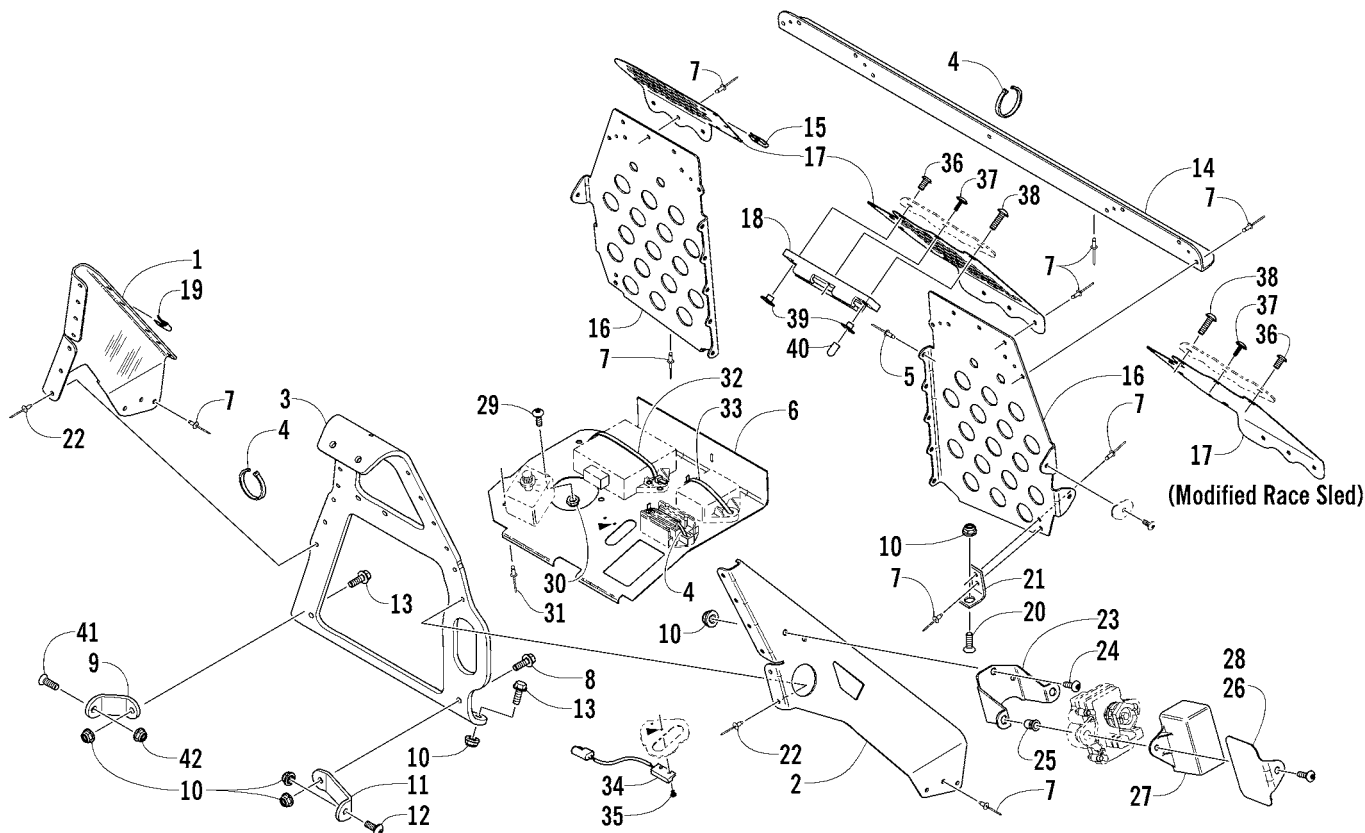
## FRONT FRAME ASSEMBLY

0740-195

Ref.	Part No.	Qty.	Description	Ref.	Part No.	Qty.	Description
1	<u>1707-035</u>	1	Chassis Assembly (inc. 2-7)	21	1623-260	2	Screw, Machine
2	1623-019	2	● Bolt, Carriage - Ribbed	22	0623-606	2	Screw, Machine
3	1623-020	3	● Bolt, Carriage - Ribbed	23	8047-426	5	Nut, Lock
4	0675-161	4	● Bearing	24	0708-447	1	Bracket, Bearing Support (inc. 25)
5	0607-657	6	● Bushing, Lower A-Arm Mount	25	0623-117	1	● Bolt, Stud - Ribbed
6	0607-656	2	● Bushing, Upper A-Arm Mount	26	8048-366	1	Nut, Lock
7	1623-010	2	● Fitting, Grease	27	8020-041	1	Screw, Cap
8	8020-039	10	Screw, Cap	28	8020-130	2	Screw, Cap
9	8020-042	1	Screw, Cap		8020-040	1	Screw, Cap (Modified Race Sled)
10	<u>3606-899</u>	1	Brace, Side Plate - Right	29	2606-695	1	Crossbrace
11	0623-454	1	Clip, Snap-In		<u>3706-146</u>	1	Crossbrace/Tension Pin (Modified Race Sled)
12	0608-405	1	Mount, Engine				
13	0623-943	1	Washer, Cup	30	8060-808	1	Rivet
14	8047-366	13	Nut, Lock	31	0623-166	1	Rivet
15	0706-371	AR	Trim	32	3002-964	1	Clamp, Wire
16	2706-151	2	Plate, Backing	33	1623-236	1	Washer
17	0623-282	AR	Rivet	34	8017-579	1	Screw, Machine
18	1623-130	AR	Rivet	35	0623-582	1	Insert
19	1623-018	2	Screw, Self-Tapping				
20	<u>3606-901</u>	1	Brace, Side Plate - Left				
	<u>3706-148</u>	1	Brace, Side Plate - Left w/Exhaust Mounting (Modified Race Sled)				

0740-228 \*See appropriate Illustrated Parts Manual pages for service part items. This chassis can be used for the 440 cc and the Modified Race Sled.

Parts available from [www.Worldofpowersports.com](http://www.Worldofpowersports.com) 217-233-1245 <sup>21</sup>

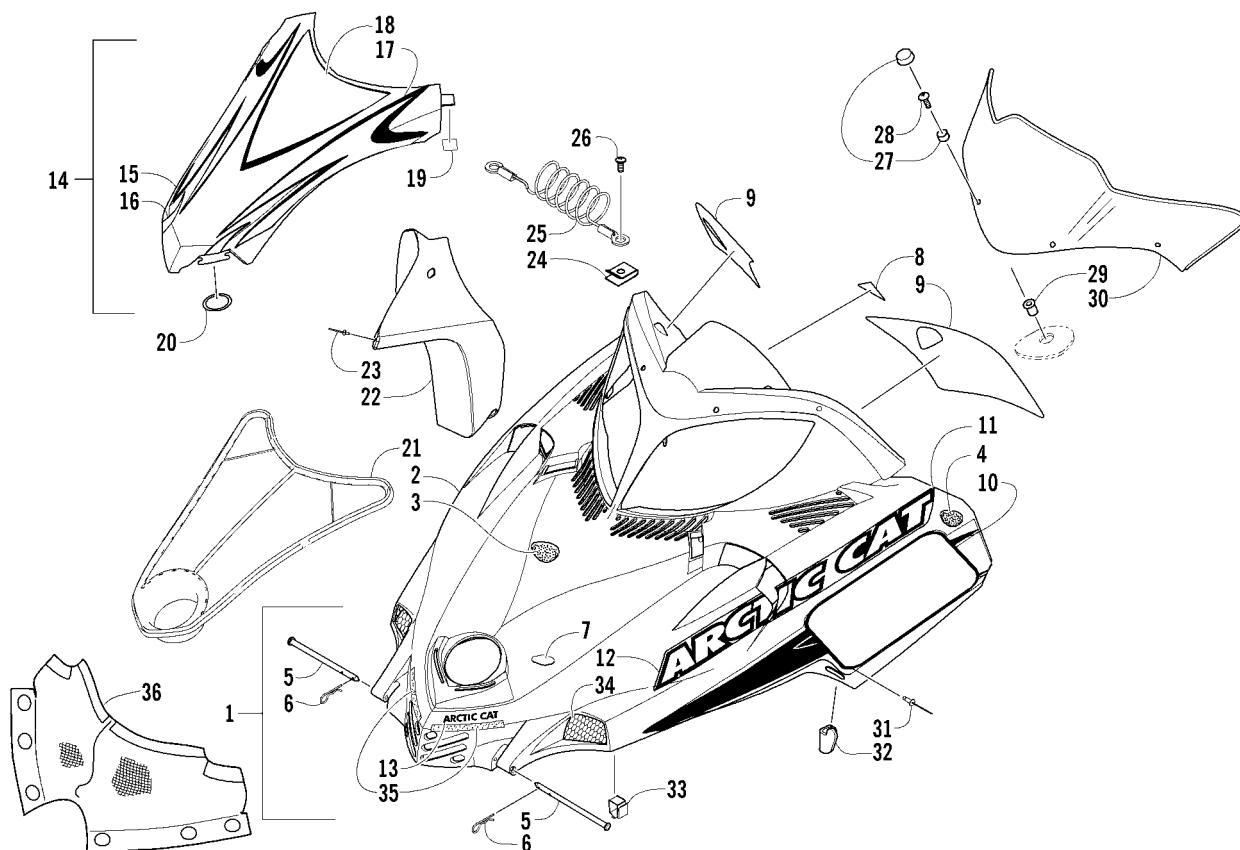


## FOOTREST AND STEERING SUPPORT ASSEMBLY

0740-163

Ref.	Part No.	Qty.	Description	Ref.	Part No.	Qty.	Description
1	0707-914	1	Support, Steering - Right - Black	20	0623-962	2	Screw, Machine
2	0707-915	1	Support, Steering - Left - Black	21	2706-696	2	Support, Footrest - Black
3	<u>0707-996</u>	1	Support, Steering - Black	22	1623-206	13	Rivet
	<u>1707-024</u>	1	Support, Steering - Black (Modified Race Sled)	23	3606-094	1	Plate, Mounting - Servomotor
4	0123-788	5	Cable Tie - 7.5 in.	24	8017-579	1	Screw, Machine
5	1623-241	10	Rivet	25	0623-582	2	Insert
6	3606-491	1	Plate, Electrical	26	<u>4606-130</u>	1	Plate, Servomotor Cover
7	1623-130	46	Rivet	27	2606-129	1	Cover, Servomotor
8	8020-040	1	Screw, Cap	28	8017-584	2	Screw, Machine
9	<u>3706-124</u>	1	Support, Side Plate - Right	29	8017-577	1	Screw, Machine
10	8047-366	11	Nut, Lock	30	8041-366	1	Nut, Lock
11	0607-779	1	Support, Side Plate - Left	31	0623-282	1	Rivet
12	8017-580	1	Screw, Machine	32	0623-144	1	Cable Tie - 17.5 in.
13	8020-041	6	Screw, Cap	33	0123-903	1	Cable Tie - 11.5 in.
14	0707-919	1	Support, Footrest - Black	34	0630-184	1	Sensor, Speed
15	1623-052	4	Nut, U	35	0623-462	2	Screw, Self-Tapping
16	<u>3706-112</u>	1	Footrest - Right - Black	36	8017-577	1	Screw, Machine
	<u>3706-113</u>	1	Footrest - Left - Black	37	0623-797	1	Screw, Self-Tapping
17	<u>3706-034</u>	1	Support, Footrest - Right - Black	38	8017-581	1	Screw, Machine
	<u>3706-035</u>	1	Support, Footrest - Left - Black	39	<u>1623-413</u>	2	Nut, T
18	<u>3606-968</u>	1	Mount, Belt Guard	40	0623-404	1	Cap, Protector
19	1623-030	4	Nut, Speed	41	<u>1623-419</u>	1	Screw, Machine
				42	8047-426	1	Nut, Lock

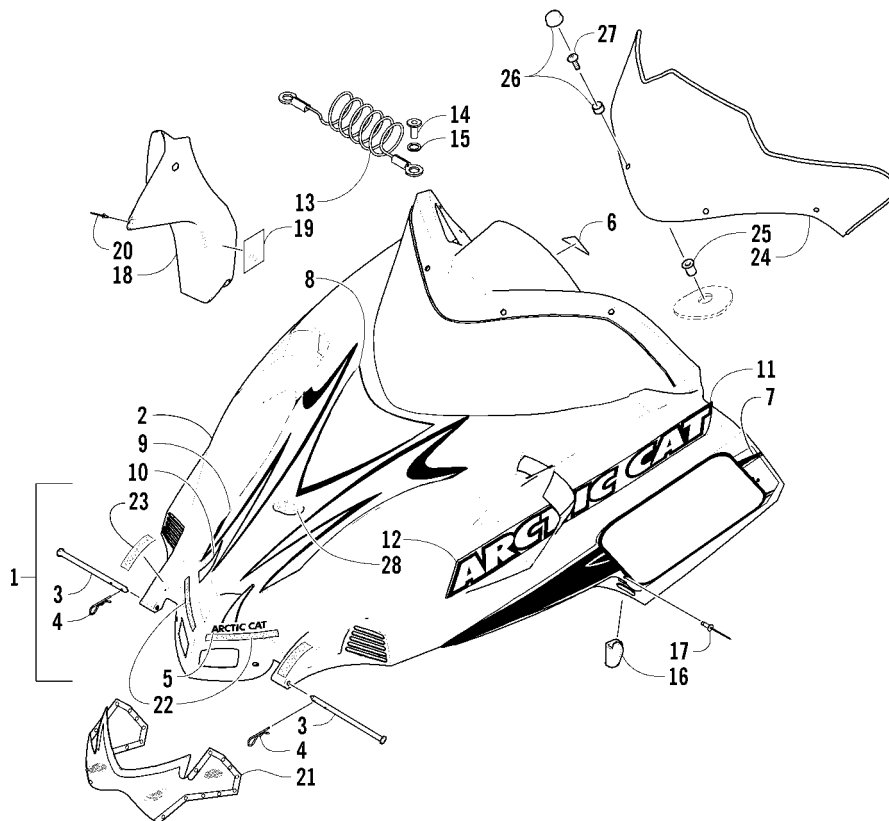




## HOOD AND WINDSHIELD ASSEMBLY

0740-212

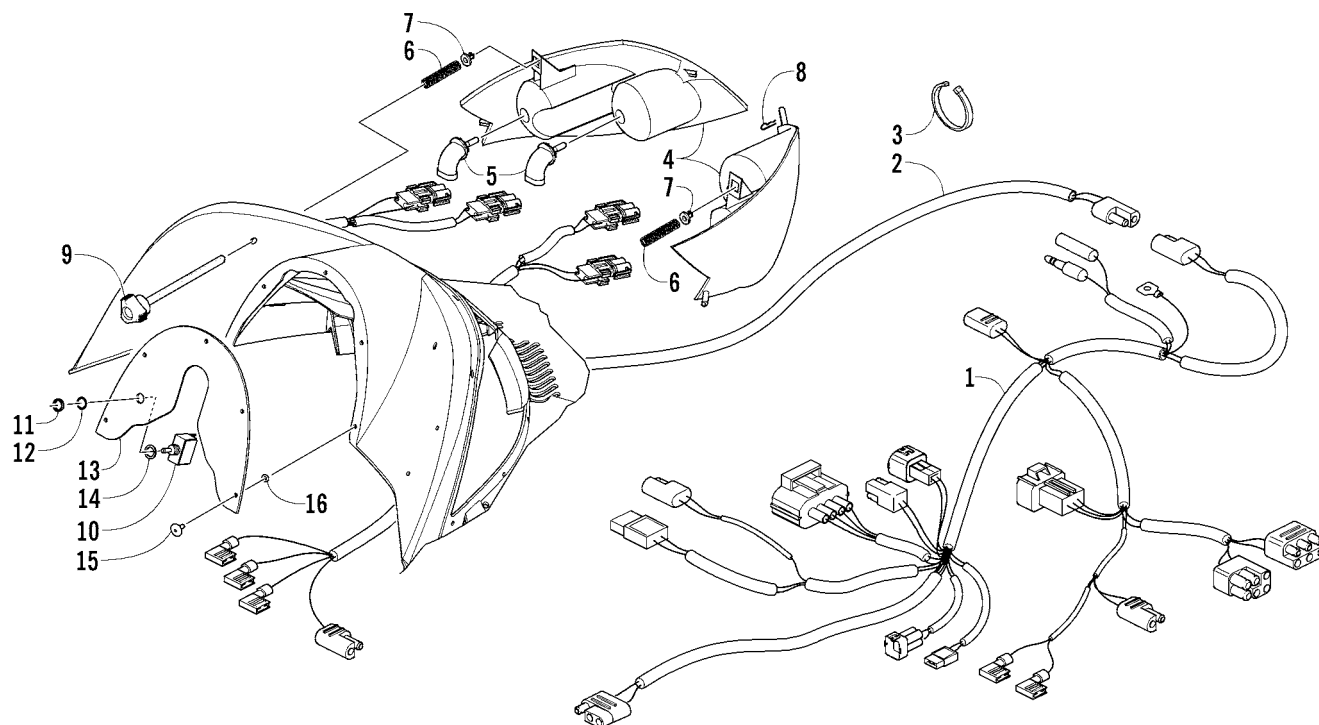
Ref.	Part No.	Qty.	Description	Ref.	Part No.	Qty.	Description
1	<u>1718-759</u>	1	Hood w/Decals - Green (inc. 2-13)	18	<u>6611-615</u>	1	● Decal, Cover - Crest
2	1718-587	1	● Hood w/o Decals - Green (inc. 3-7)	19	2606-007	1	● Foil, Protective
3	0617-463	1	●● Foam, Hood - Middle	20	2606-801	2	O-Ring
4	0617-464	1	●● Foam, Hood - Rear - Right	21	3606-150	1	Screen, Hood
	0617-465	1	●● Foam, Hood - Rear - Left	22	3606-030	1	Duct, Brake
5	1623-026	2	●● Pin, Clevis	23	<u>8061-506</u>	5	Rivet
6	0623-847	2	●● Clip, Hairpin	24	1623-052	2	U-Nut
7	3606-130	1	●● Foil, Hood	25	2606-726	2	Cable, Hood
8	3611-611	1	● Decal, "Made In U.S.A." - Domed	26	0623-302	2	Screw, Self-Tapping
9	<u>6611-628</u>	1	● Decal, Console - Right	27	0124-054	4	Snap Cap w/Washer
	<u>6611-629</u>	1	● Decal, Console - Left	28	0623-902	4	Screw, Machine
10	<u>6611-624</u>	1	● Decal, Hood - Lower Right	29	0623-845	4	Nut, Expansion
	<u>6611-625</u>	1	● Decal, Hood - Lower Left	30	<u>3606-842</u>	1	Windshield
11	<u>7611-026</u>	1	● Decal, Hood - Vent - Rear - Right	31	8061-708	4	Rivet
	<u>7611-027</u>	1	● Decal, Hood - Vent - Rear - Left	32	2606-096	2	Hold-Down, Hood - Right
12	<u>7611-028</u>	1	● Decal, Hood - Vent - Front - Right		1606-441	2	Hold-Down, Hood - Left
	<u>7611-029</u>	1	● Decal, Hood - Vent - Front - Left	33	0123-394	4	Clip, Retaining
13	3611-187	1	● Decal, "Arctic Cat" - Hood	34	2606-974	1	Screen, Hood - Right - Black
14	<u>1718-761</u>	1	Cover, Hood - Black (inc. 15-19)		2606-975	1	Screen, Hood - Left - Black
15	2706-031	1	● Cover, Hood w/o Decals - Black	35	2706-458	AR	Hook, Velcro - 10 ft
16	<u>6611-618</u>	1	● Decal, Cover - Front - Right	36	3606-409	1	Screen, Hood
	<u>6611-619</u>	1	● Decal, Cover - Front - Left				
17	<u>6611-616</u>	1	● Decal, Cover - Side - Right				
	<u>6611-617</u>	1	● Decal, Cover - Side - Left				



## HOOD AND WINDSHIELD ASSEMBLY (Modified Race Sled)

0740-223

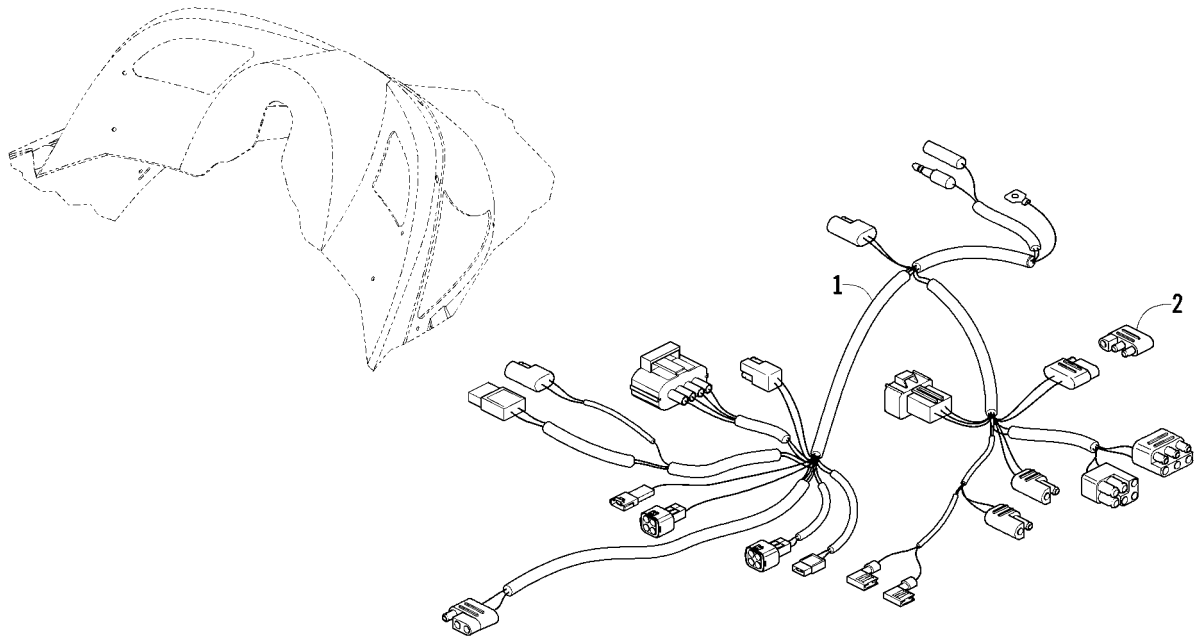
Ref.	Part No.	Qty.	Description	Ref.	Part No.	Qty.	Description
1	<u>1718-853</u>	1	Hood w/Decals - Green (inc. 2-12)	13	2606-726	2	Cable, Hood
2	<u>2706-638</u>	1	● Hood w/o Decals - Green (inc. 3-4)	14	8060-628	2	Rivet, Blind
3	1623-026	2	●● Pin, Clevis	15	8050-157	2	Washer, Flat
4	0623-847	2	●● Clip, Hairpin	16	2606-096	2	Hold-Down, Hood - Right
5	3611-187	1	● Decal, "Arctic Cat" - Hood	16	1606-441	2	Hold-Down, Hood - Left
6	3611-611	1	● Decal, "Made In U.S.A." - Domed	17	8061-708	4	Rivet
7	<u>6611-624</u>	1	● Decal, Hood - Lower Right	18	3606-030	1	Duct, Brake
	<u>6611-625</u>	1	● Decal, Hood - Lower Left	19	2606-556	1	Foil, Protective
8	<u>6611-615</u>	1	● Decal, Cover - Crest	20	<u>8061-506</u>	5	Rivet
9	<u>6611-616</u>	1	● Decal, Cover - Side - Right	21	<u>3706-081</u>	1	Screen, Hood - Assembly
	<u>6611-617</u>	1	● Decal, Cover - Side - Left	22	2706-458	AR	Velcro, Hook - 10 ft
10	<u>6611-618</u>	1	● Decal, Cover - Front - Right	23	<u>6990-266</u>	AR	Velcro, Hook - 10 ft
	<u>6611-619</u>	1	● Decal, Cover - Front - Left	24	<u>3606-842</u>	1	Windshield
11	<u>7611-026</u>	1	● Decal, Hood - Vent - Rear - Right	25	0623-845	4	Nut, Expansion
	<u>7611-027</u>	1	● Decal, Hood - Vent - Rear - Left	26	0124-054	4	Snap Cap w/Washer
12	<u>7611-028</u>	1	● Decal, Hood - Vent - Front - Right	27	0623-902	4	Screw, Machine
	<u>7611-029</u>	1	● Decal, Hood - Vent - Front - Left	28	2606-577	1	Foil, Protective - 6 in. x 12 in.



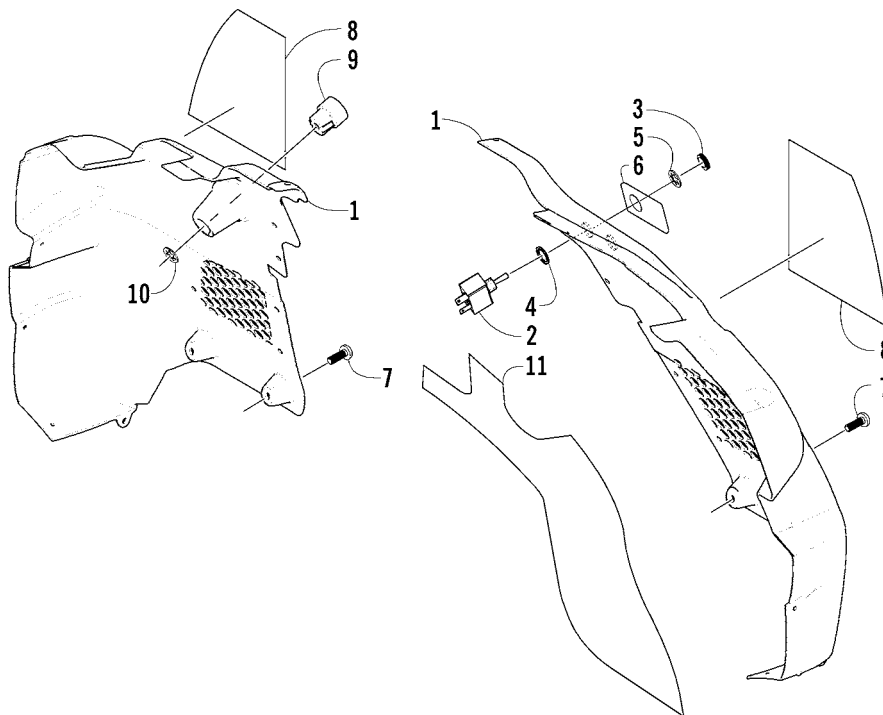
## HEADLIGHT, INSTRUMENTS, AND WIRING ASSEMBLIES

0739-092

Ref.	Part No.	Qty.	Description	Ref.	Part No.	Qty.	Description
1	0686-982	1	Harness, Main	9	1623-024	2	Screw, Adjuster
2	0686-980	1	Harness, Hood	10	0609-233	1	Switch, High/Low Beam (inc. 11)
3	0123-788	AR	Cable Tie - 8 in.	11	0609-220	1	● Nut
4	0609-530	1	Lens/Reflector - Headlight - Right (inc. 5)	12	0123-985	1	Washer, Lock - Internal Tooth
	0609-531	1	Lens/Reflector - Headlight - Left (inc. 5)	13	3606-446	1	Plate, Cover
5	0609-251	4	● Bulb, Headlight	14	0623-153	1	Washer, Nylon
6	0623-360	2	Spring, Adjuster	15	8061-506	5	Rivet
7	1623-025	2	Insert	16	0123-149	5	Washer
8	1623-137	2	Clip, Hairpin				



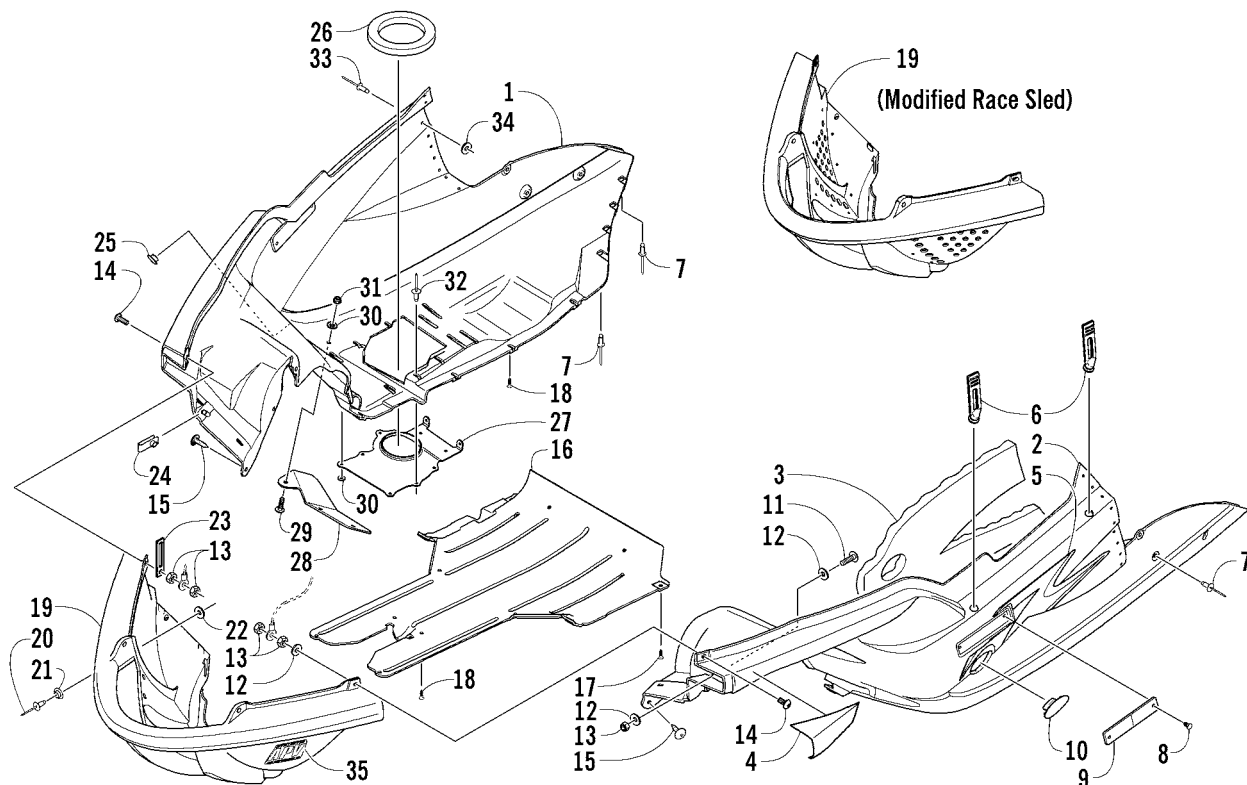
Ref.	Part No.	Qty.	Description	Ref.	Part No.	Qty.	Description
1	0686-997	1	Harness, Main	2	0630-192	1	Resistor, Timing



## CONSOLE AND SWITCH ASSEMBLY

0740-184

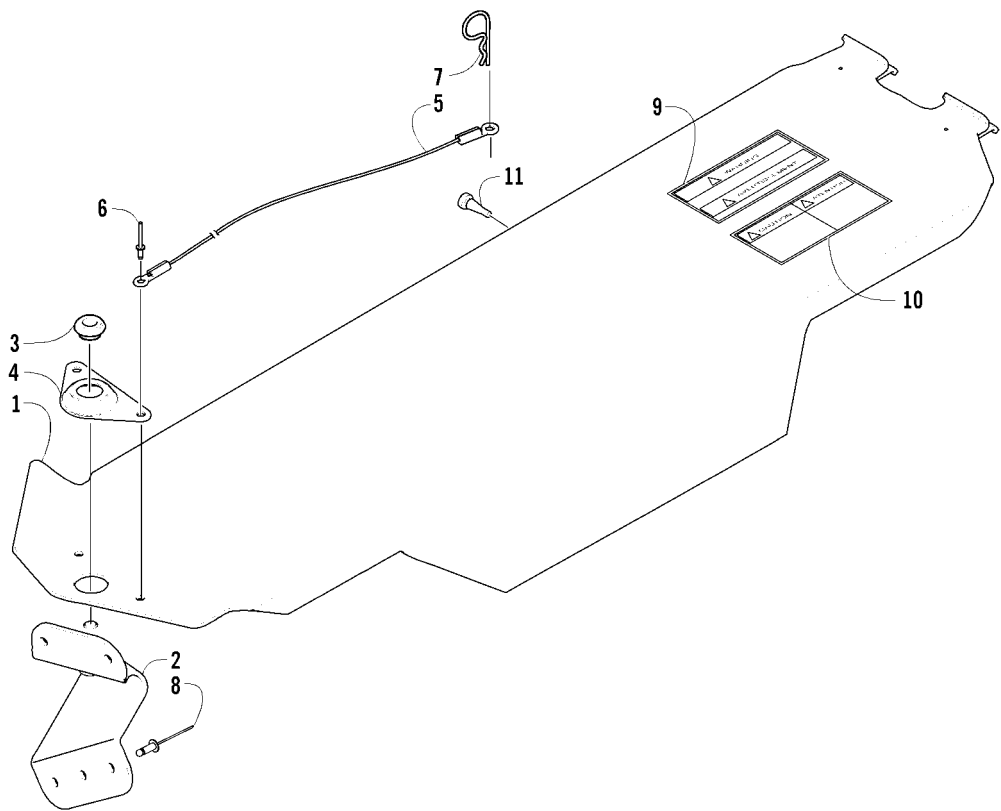
Ref.	Part No.	Qty.	Description	Ref.	Part No.	Qty.	Description
1	3606-496	1	Console - Right	7	0623-797	13	Screw, Self-Tapping
	<del>3706-159</del>	1	Console - Left	8	5611-926	1	Decal, Caution/Warning - Right
2	0609-186	1	Switch, Handwarmer/Thumbwarmer (inc. 3)		5611-927	1	Decal, Caution/Warning - Left
3	0609-220	1	● Nut, Knurled	9	0116-469	1	Bushing, Recoil
4	0623-153	1	Washer, Nylon	10	0123-579	1	Nut, Push
5	0123-985	1	Washer, Lock - Internal Tooth	11	<del>0617-482</del>	1	Foam, Console - Right (STD)
6	<del>7611-112</del>	1	Decal, Toggle Switch - Handwarmer		<del>0617-483</del>	1	Foam, Console - Left (STD)



## BELLY PAN ASSEMBLY

0740-190

Ref.	Part No.	Qty.	Description	Ref.	Part No.	Qty.	Description
1	2706-588	1	Belly Pan - Right - Black	20	8060-209	6	● Rivet
2	<del>2706-851</del>	1	Belly Pan - Left - Black		8060-209	18	● Rivet (Modified Race Sled)
3	0617-443	1	Foam, Belly Pan (STD)	21	0116-074	6	● Snap
4	5611-942	1	Decal, Belly Pan - Front Right		0116-074	18	● Snap (Modified Race Sled)
	5611-943	1	Decal, Belly Pan - Front Left	22	1623-153	6	● Washer
5	<u>6611-620</u>	1	Decal, Belly Pan - Lower Right		1623-153	18	● Washer (Modified Race Sled)
	<u>6611-621</u>	1	Decal, Belly Pan - Lower Left	23	3002-964	1	Clamp, Wire
6	1606-930	4	Strap, Hold-Down	24	1623-030	2	Nut, Speed
7	8061-628	12	Rivet	25	3606-050	1	Pin, Resonator Mounting
8	0623-269	4	Clip, Retaining	26	1612-408	1	Seal, Exhaust
9	0606-526	2	Reflector, Front - Amber	27	1612-788	1	Deflector, Exhaust
10	2606-650	1	Panel, Clutch Access - Black	28	3606-448	1	Plate, Deflector
11	8017-581	2	Screw, Machine	29	8017-397	3	Screw, Machine
12	8050-217	5	Washer	30	0623-594	4	Washer
13	8041-366	6	Nut, Lock	31	8041-246	3	Nut, Lock
14	8017-582	2	Screw, Machine	32	8061-708	8	Rivet
15	0623-784	4	Screw, Self-Tapping	33	8061-508	22	Rivet
16	3606-027	1	Belly Pan, Center - Black	34	1623-236	22	Washer
17	1623-031	4	Screw, Self-Tapping	35	<u>7611-150</u>	2	Decal, APV Oil (STD)
18	0623-797	21	Screw, Self-Tapping				
19	2706-626	1	Bumper, Front - Green (inc. 20-22)				
	<u>3706-079</u>	1	Bumper, Front - Green (inc. 20-22) (Modified Race Sled)				



**BELT GUARD ASSEMBLY**

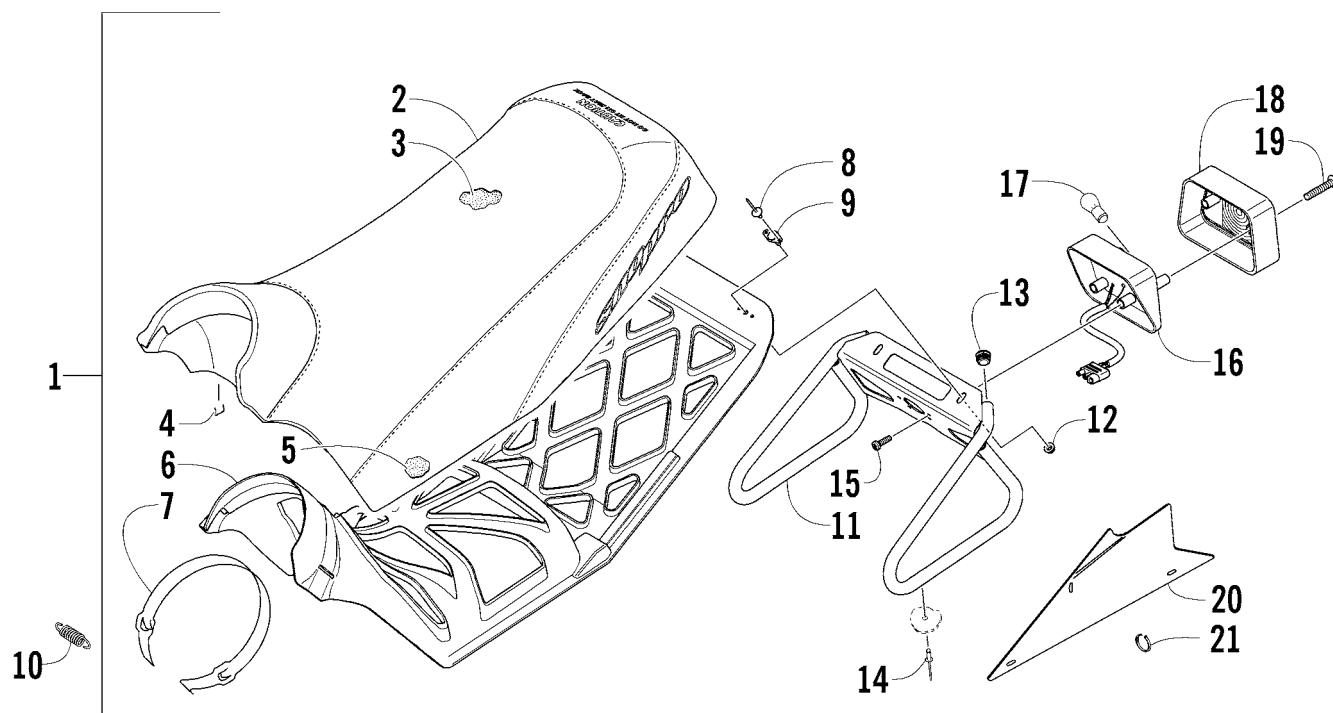
0740-194

Ref.	Part No.	Qty.	Description	Ref.	Part No.	Qty.	Description
1	<u>0707-976</u>	1	Guard, Belt	6	8060-504	2	Rivet
	<u>0707-995</u>	1	Guard, Belt (Modified Race Sled)	7	0605-283	1	Hairpin, Cotter
2	<u>0707-992</u>	1	Bracket, Mounting - Belt Guard	8	8061-506	5	Rivet
3	0607-549	1	Bushing, Belt Guard	9	1611-565	1	Decal, Warning - Belt Guard
4	0607-550	1	Plate, Bushing - Belt Guard	10	1611-582	1	Decal, Caution - Jetting/Storage
5	0607-447	1	Cable	11	3606-178	1	Bumper, Rubber



30

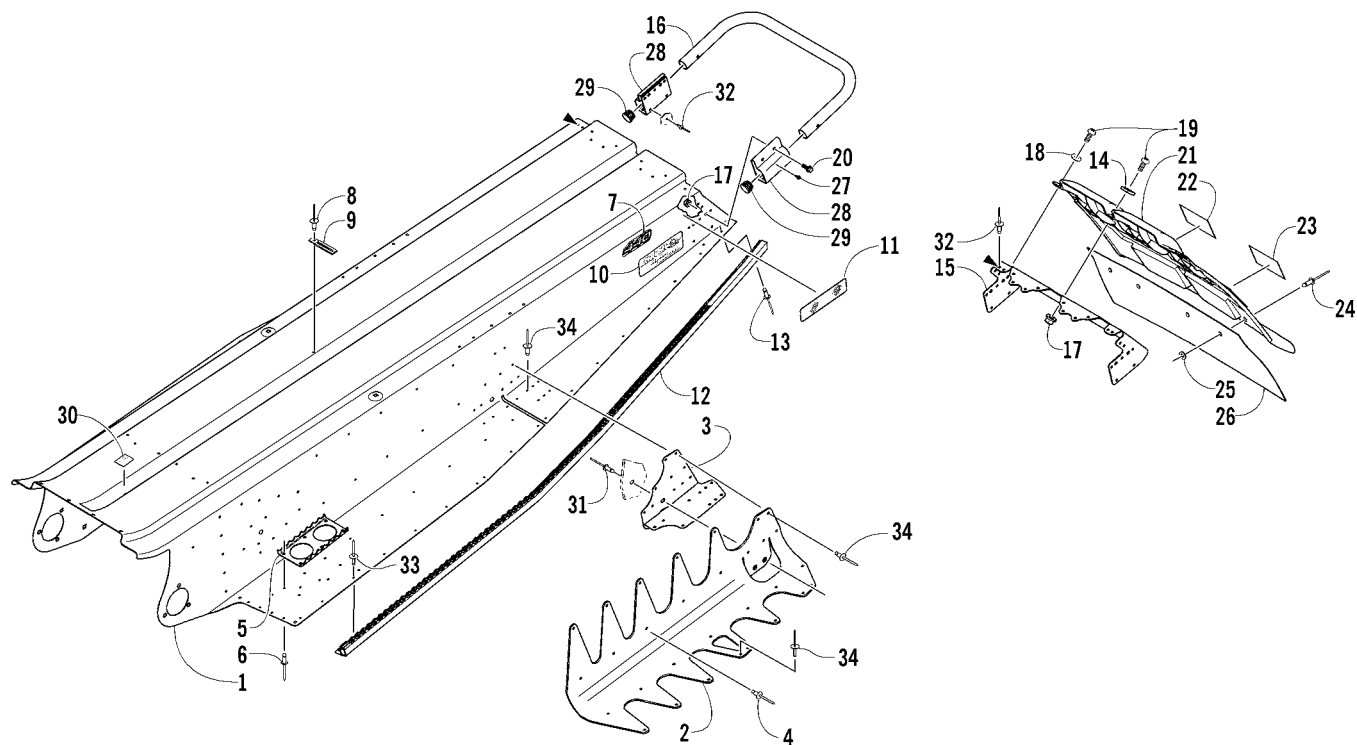




## SEAT ASSEMBLY

0740-224

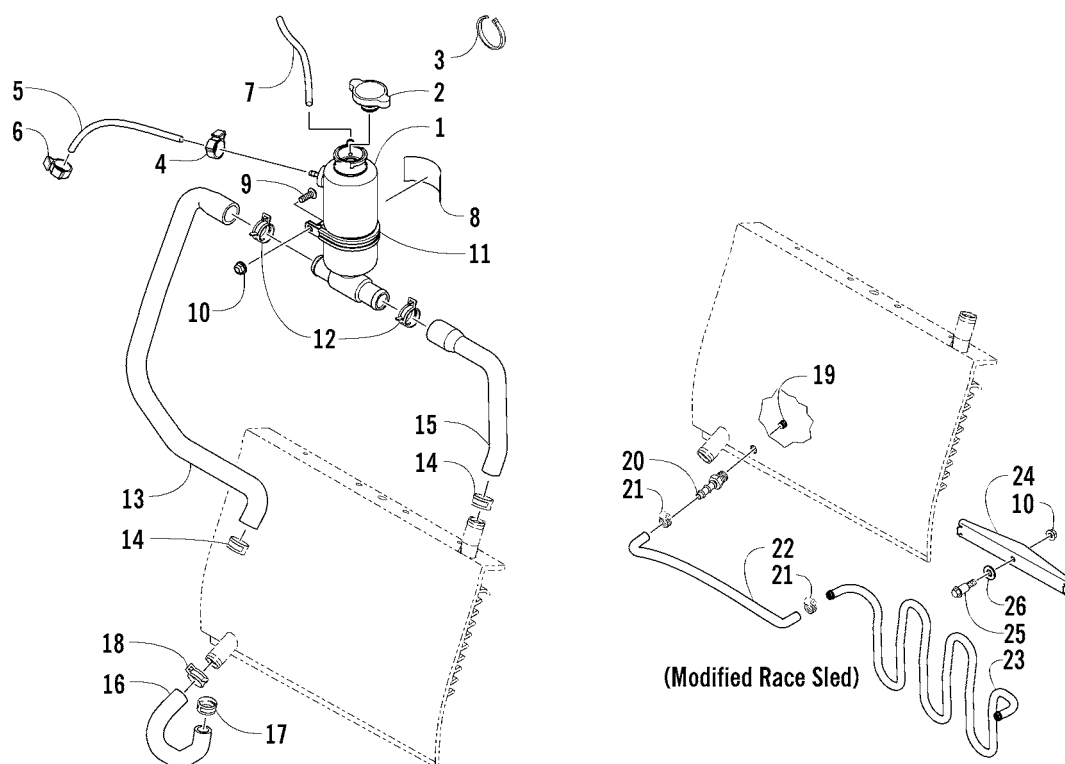
Ref.	Part No.	Qty.	Description	Ref.	Part No.	Qty.	Description
1	<u>7998-433</u>	1	Complete Seat Assembly (inc. 2-9)	12	8047-366	2	Nut, Lock
2	<u>2706-844</u>	1	● Cover, Seat	13	0606-654	2	Plug, Hole
3	0717-194	1	● Foam, Seat - Upper	14	1623-130	10	Rivet
4	0624-528	AR	● Staple	15	1623-251	2	Screw, Plastite
5	0617-461	1	● Foam, Seat - Lower	16	0609-664	1	Taillight w/Socket Assembly (inc. 17-19)
6	3606-452	1	● Base, Seat	17	0109-460	1	● Bulb, Taillight
7	2706-768	1	● Strap, Hold-Down - Seat	18	0609-665	1	● Lens, Taillight
8	8061-508	4	● Rivet	19	0609-666	2	● Screw, Self-Tapping
9	0716-858	2	● Hold-Down, Seat	20	<u>3706-128</u>	1	Kit, Number Plate
10	3606-549	1	Spring, Seat Hold-Down Strap	21	0123-788	6	Cable Tie
11	<u>2706-885</u>	1	Subframe, Seat				



## TUNNEL, REAR BUMPER, AND TAILLIGHT ASSEMBLIES

0740-217

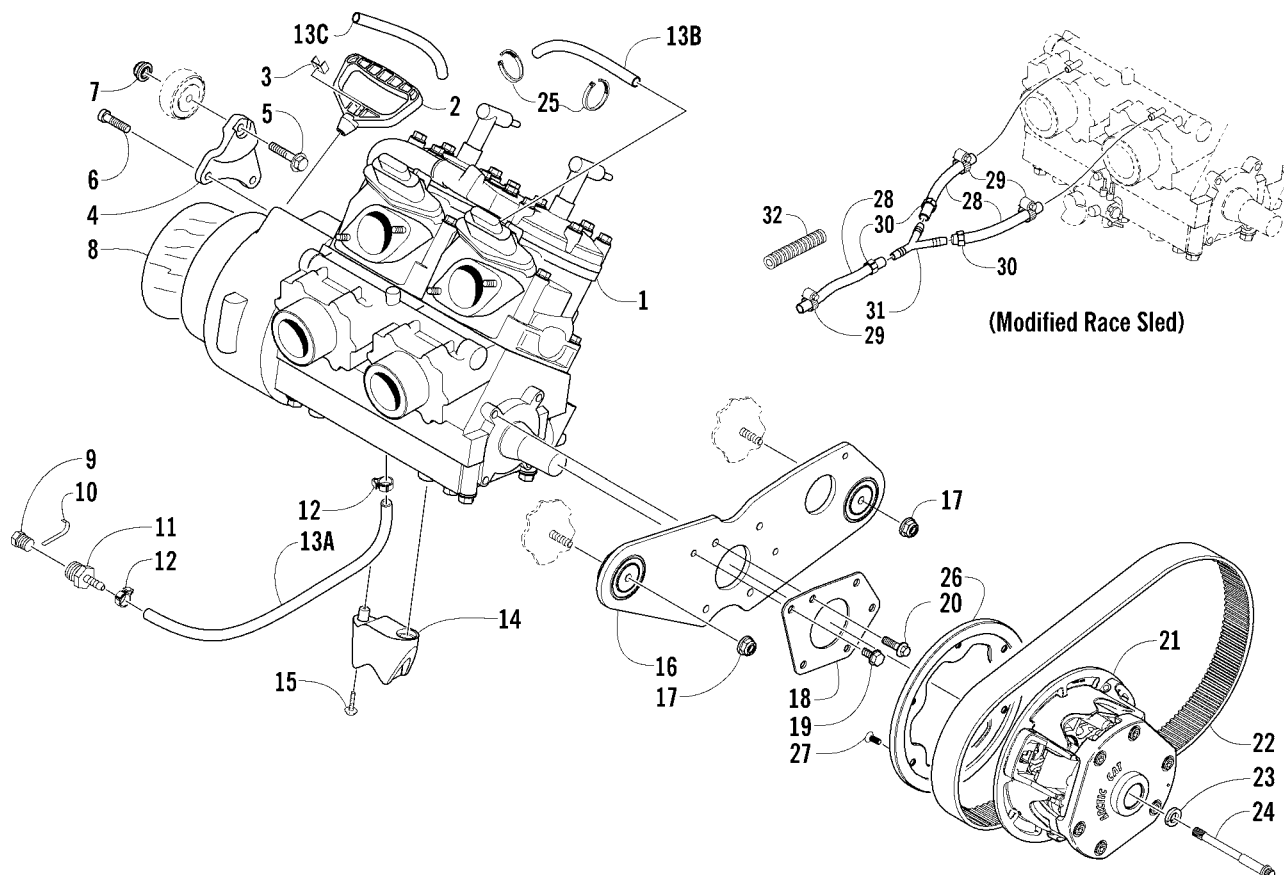
Ref.	Part No.	Qty.	Description	Ref.	Part No.	Qty.	Description
1	<u>1718-879</u>	1	Tunnel Assembly (inc. 2-4)	16	<u>2706-984</u>	1	Bumper, Rear - Green
2	<u>2706-708</u>	1	● Bracket, Suspension Mounting - Right - Rear	17	8047-366	7	Nut, Lock
	<u>2706-709</u>	1	● Bracket, Suspension Mounting - Left - Rear	18	1623-242	2	Washer
3	<u>2706-940</u>	1	● Plate, Backing - Right	19	8017-581	3	Screw, Machine
	<u>2706-941</u>	1	● Plate, Backing - Left	20	8020-041	4	Screw, Cap
4	<u>0623-072</u>	30	● Rivet	21	2706-590	1	Snowflap w/Decal - Black (inc. 22-23)
5	<u>2706-700</u>	2	Plate, Grip	22	5611-852	1	● Decal, Warning - Towing (French)
6	<u>8060-628</u>	12	Rivet	23	5611-853	1	● Decal, Warning - Towing (English)
7	<u>6611-633</u>	2	Decal, Tunnel	24	8061-628	7	Rivet
8	<u>8060-706</u>	1	Rivet	25	8050-157	7	Washer
9	<u>3002-964</u>	1	Clamp, Wire	26	3606-226	1	Extension, Snowflap
10	<u>5611-939</u>	2	Decal, A/C Genuine Lubricants	27	0623-081	2	Screw, Self-Tapping
11	<u>0411-647</u>	2	Decal, Reflector - Red	28	<u>3706-105</u>	2	Bracket, Rear Bumper
12	<u>3706-106</u>	1	Roll, Tunnel - Right - Black	29	0603-049	2	Cap, Spindle
	<u>3706-107</u>	1	Roll, Tunnel - Left - Black	30	2606-007	1	Foil, Protective
13	<u>8060-484</u>	4	Rivet	31	1623-241	2	Rivet
14	<u>3706-061</u>	1	Holddown, Snowflap	32	8060-686	32	Rivet
15	<u>3706-108</u>	1	Plate, Tunnel - Close Off	33	0123-418	40	Rivet
				34	0623-806	30	Rivet



## COOLING ASSEMBLY

0740-225 \*Part number for individual hose length not available.

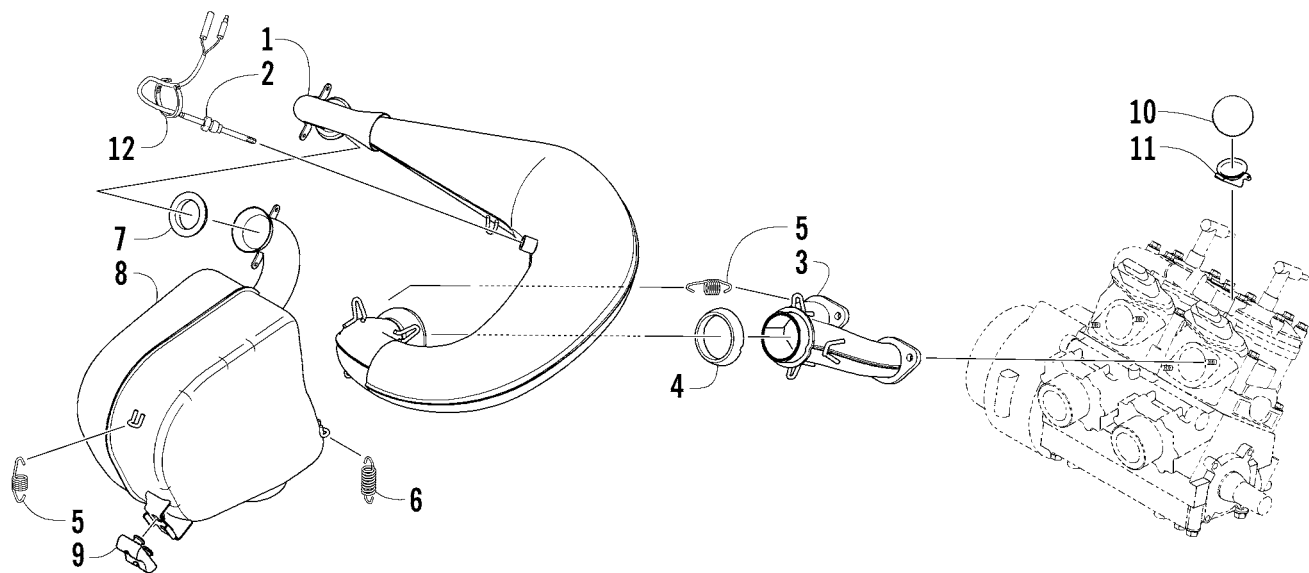
Ref.	Part No.	Qty.	Description	Ref.	Part No.	Qty.	Description
1	2706-583	1	Tank, Coolant	13	0610-580	1	Hose, Coolant - Coolant Tank/Engine
2	0606-268	1	Cap, Filler Neck	14	1623-049	2	Clamp, Hose
	3606-492	1	Cap, Filler Neck (Modified Race Sled)	15	0610-579	1	Hose, Coolant - Heat Exchanger/Coolant Tank
3	0123-788	AR	Cable Tie - 8 in.	16	0610-527	1	Hose, Coolant - Engine/Heat Exchanger
4	0124-045	1	Clamp, Hose	17	<u>1623-418</u>	1	Clamp, Hose
5	0610-538	AR	Hose, Vent - 25 ft	18	0623-941	1	Clamp, Hose
	*	1	Hose, Vent - 16 in.	19	<u>1623-436</u>	1	Plug, Pipe (Modified Race Sled)
6	0623-063	1	Clamp, Hose	20	<u>1623-432</u>	1	Fitting, Straight (Modified Race Sled)
7	0610-015	AR	Hose, Coolant - 100 ft	21	0623-373	2	Clamp, Hose (Modified Race Sled)
	0610-016	AR	Hose, Coolant - 25 ft	22	<u>0610-660</u>	1	Hose, Front Exchanger/Cooling Tube (Modified Race Sled)
	*	1	Hose, Coolant - 22 in.	23	<u>4606-104</u>	1	Tube, Cooling (Modified Race Sled)
8	2611-758	1	Decal, Fill Level - Coolant Tank	24	<u>4606-106</u>	1	Retainer, Cooling Tube (Modified Race Sled)
9	8017-580	1	Screw, Machine				
10	8047-366	1	Nut, Lock	25	0623-855	1	Screw, Hex (Modified Race Sled)
	8047-366	2	Nut, Lock (Modified Race Sled)	26	0623-044	1	Washer (Modified Race Sled)
11	0623-761	1	Clamp, Coolant Tank				
12	0623-736	2	Clamp, Hose				



## ENGINE AND RELATED PARTS

0740-216 \*Part number for individual hose length not available.

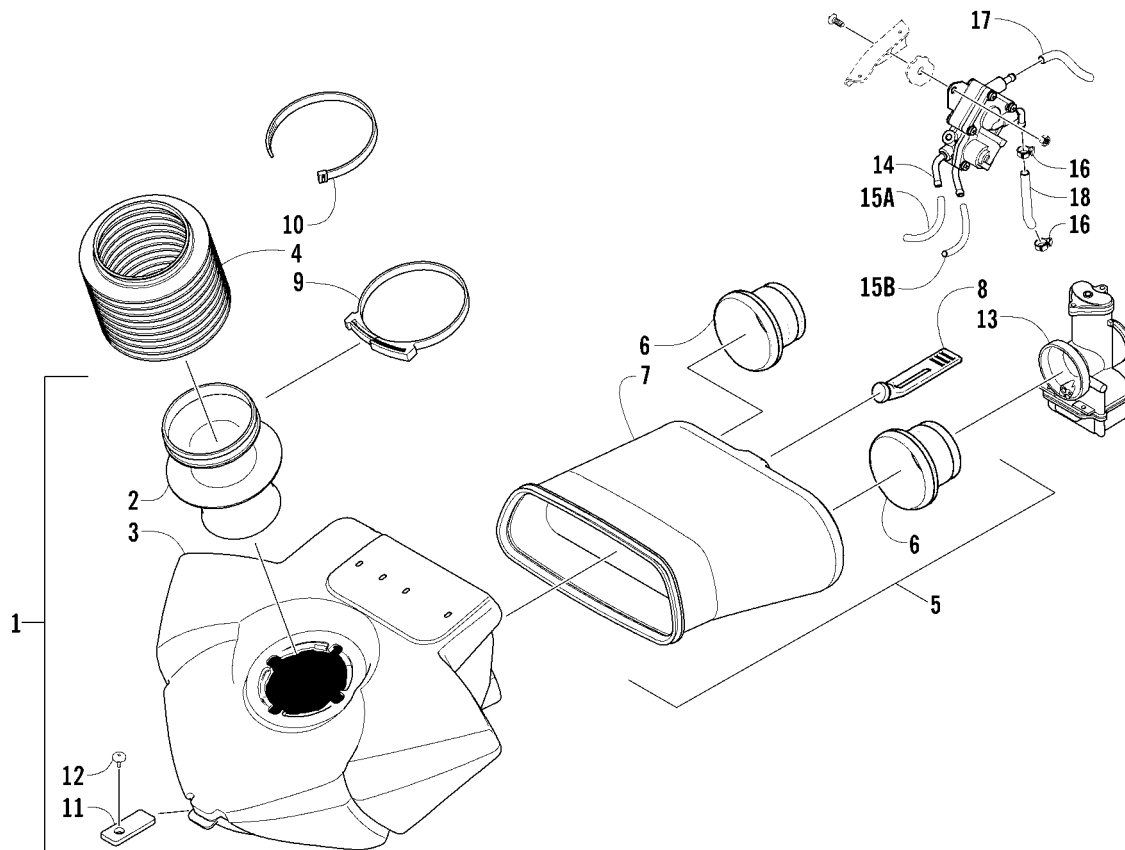
Ref.	Part No.	Qty.	Description	Ref.	Part No.	Qty.	Description
1	0662-388	1	Engine, AW44L4**	19	0623-765	2	Screw, Self-Tapping
2	0636-363	1	Handle, Recoil	20	8408-825	4	Screw, Cap
3	0606-885	1	Cap, Recoil Handle	21	0725-406	1	Clutch, Drive
4	0608-420	1	Bracket, Engine Mounting - Right		0746-148	1	Clutch, Drive (Modified Race Sled)
5	8020-136	1	Screw, Cap	22	0627-010	1	Belt, Drive
6	8408-830	2	Screw, Cap		0627-020	1	Belt, Drive (Modified Race Sled)
7	8047-426	1	Nut, Lock	23	0623-210	1	Washer, High Collar
8	1670-328	1	Foil, Protective	24	0623-804	1	Bolt, Clutch
9	0670-243	1	Plug	25	0123-811	4	Cable Tie - 4 in.
10	0670-289	AR	Tape, Teflon	26	0645-443	1	Ring, Clutch Damper
11	0623-801	1	Adapter, Fitting	27	1623-128	6	Screw, Machine
12	0124-045	2	Clamp, Hose	28	0610-076	AR	Hose, Water - 10 ft
13	0610-007	AR	Hose, Gasline - 25 ft	29	0623-373	3	Clamp
	A*	1	Hose, Gasline - 18 in.	30	0610-581	3	Clamp
	B*	1	Hose, Gasline - 28 in.	31	1670-596	1	Fitting, Y
	C*	1	Hose, Gasline - 30 in.	32	0619-776	AR	Conduit, Flexible - 5 ft
14	0608-401	1	Snubber, Bottom Out				** See Parts List on page 41 of this Illustrated Parts Manual for Modified Race Sled engine and component information.
	0708-445	1	Snubber, Bottom Out (Modified Race Sled)				
15	1623-031	1	Screw, Self-Tapping				
16	0708-463	1	Bracket, Engine Mounting w/Mounts - Left				
17	8048-426	2	Nut, Lock				
18	0608-418	1	Plate, Reinforcement				



# EXHAUST ASSEMBLY

0740-213

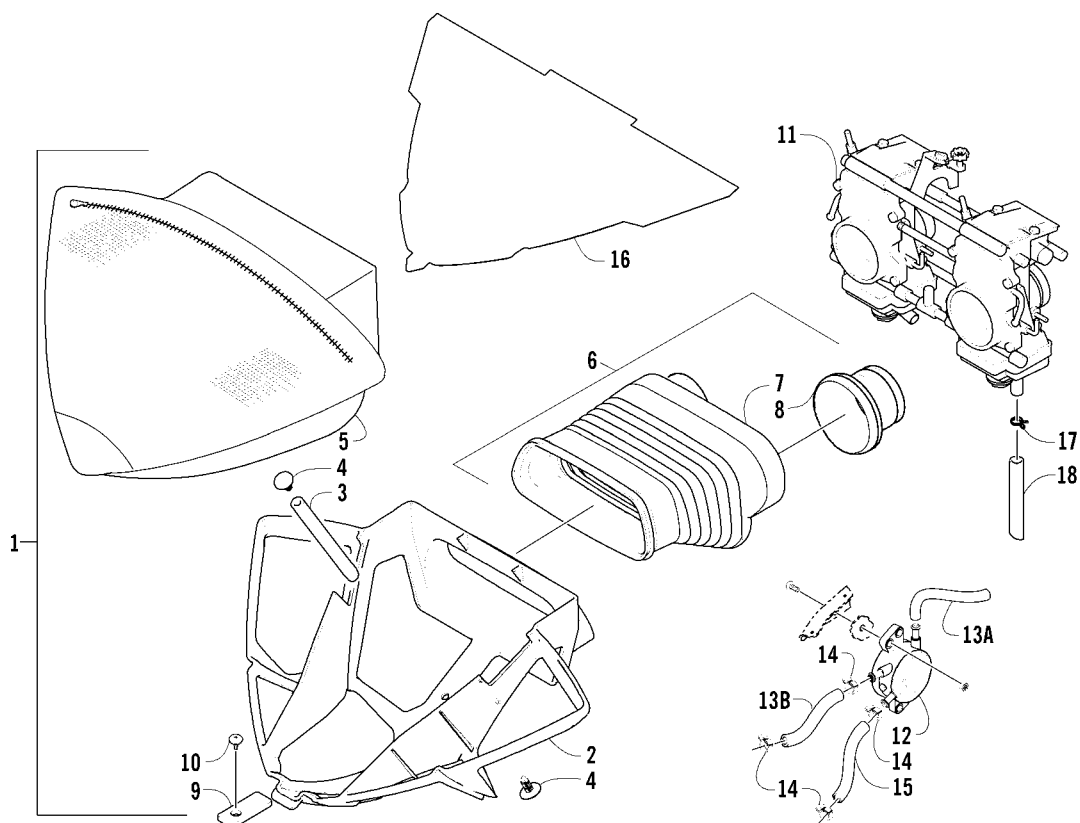
Ref.	Part No.	Qty.	Description	Ref.	Part No.	Qty.	Description
1	1712-163	1	Chamber, Expansion - Coated	7	0612-693	1	Gasket, Exhaust - Tailpipe
2	0630-145	1	Sensor, Temperature - Exhaust	8	1712-090	1	Resonator
3	1712-097	1	Manifold, Exhaust	9	1612-685	1	Mount, Resonator - Rubber
4	1612-014	1	Gasket, Exhaust	10	1612-678	1	Mount, Expansion Chamber
5	0612-668	5	Spring, Extension	11	1712-036	1	Bracket, Mounting - Expansion Chamber
6	0612-471	4	Spring, Exhaust	12	0123-811	1	Cable Tie - 4 in.



## AIR SILENCER ASSEMBLY

0740-196 \*Part number for individual hose length not available.

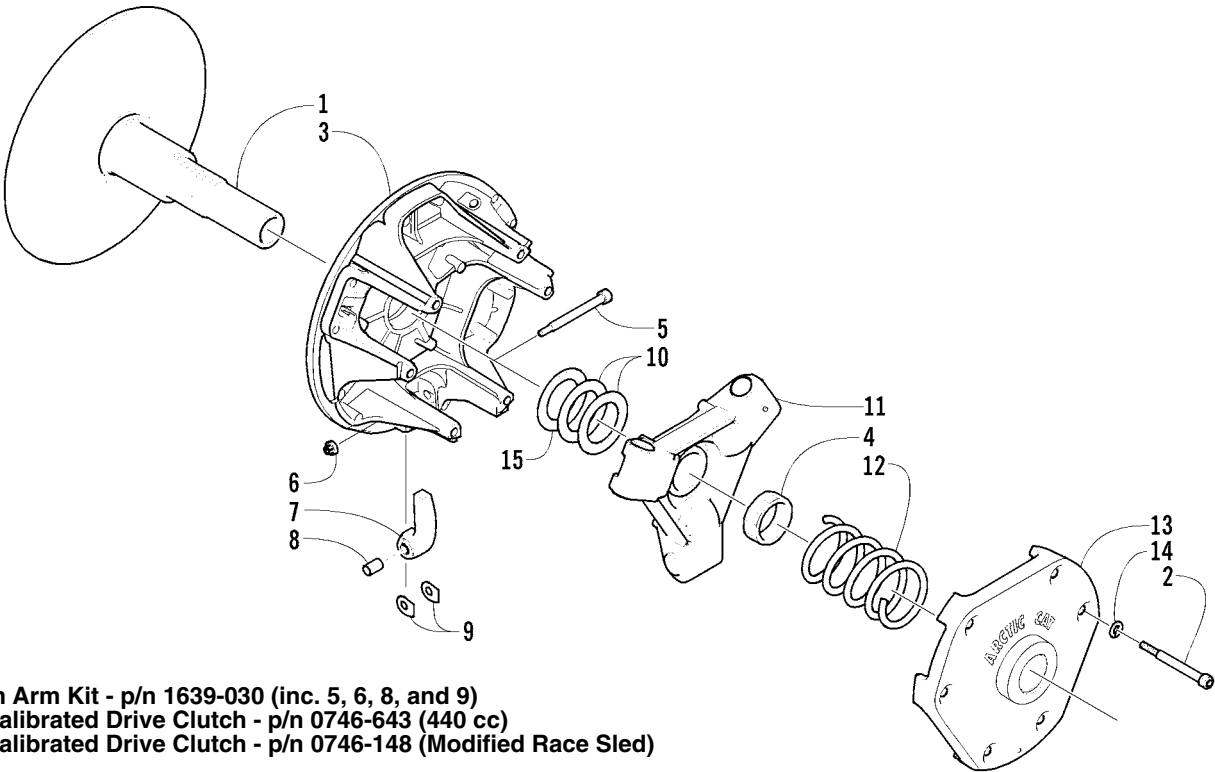
Ref.	Part No.	Qty.	Description	Ref.	Part No.	Qty.	Description
1	0770-611	1	Silencer, Air - Assembly (inc. 2-3)	13	1670-605	2	Carburetor, TMX34-31
2	1670-473	1	● Tube, Air-Intake	14	1670-269	1	Pump, Fuel
3	1670-616	1	● Silencer, Air	15	0610-017	AR	Hose, Gasline - 100 ft
4	1670-514	1	Connector, Air-Intake		0610-008	AR	Hose, Gasline - 25 ft
5	1670-676	1	Boot, Air Silencer - Assembly (inc. 6-8)		A*	1	Hose, Gasline - 9 in.
6	1670-677	2	● Boot, Carburetor		B*	1	Hose, Gasline - 15 in.
7	1670-678	1	● Boot, Extension	16	0124-045	2	Clamp, Hose
8	1606-930	1	● Strap, Hold-Down	17	0610-015	AR	Hose, Gasline - 100 ft
9	1623-132	1	Clamp, Air-Intake Connector		0610-016	AR	Hose, Gasline - 25 ft
10	0623-144	1	Cable Tie - 17.5 in.		*	1	Hose, Gasline - 11 in.
11	3606-146	1	Hold-Down, Air Silencer	18	0610-007	AR	Hose, Impulse - 25 ft
12	0623-784	1	Screw, Self-Tapping		*	1	Hose, Impulse - 7 in.



## AIR SILENCER ASSEMBLY (Modified Race Sled)

0740-226 \*Part number for individual hose length not available.

Ref.	Part No.	Qty.	Description	Ref.	Part No.	Qty.	Description
1	0770-672	1	Silencer, Air - Assembly (inc. 2-5)	12	1670-665	1	Pump, Fuel
2	0770-673	1	● Silencer, Air	13	0610-017	AR	Hose, Gasline - 100 ft
3	1670-645	1	● Tube, Support		0610-008	AR	Hose, Gasline - 25 ft
4	0623-544	2	● Clip, Retaining		A*	1	Hose, Gasline - 22 in.
5	1670-623	1	● Cover, Intake Screen		B*	1	Hose, Gasline - 15 in.
6	1670-583	1	Boot, Air Silencer - Assembly (inc. 7-8)	14	0124-045	4	Clamp, Hose
7	1670-590	1	● Boot, Extension	15	0610-007	AR	Hose, Impulse
8	1670-586	2	● Boot, Carburetor		*	1	Hose, Impulse - 10 in.
9	3606-146	1	Hold-Down, Air Silencer	16	4606-045	1	Cover, Air Silencer
10	0623-784	1	Screw, Self-Tapping	17	0623-652	2	Clamp, Hose
11	3006-986	1	Carburetor	18	0610-442	2	Hose, Drain



Cam Arm Kit - p/n 1639-030 (inc. 5, 6, 8, and 9)  
Uncalibrated Drive Clutch - p/n 0746-643 (440 cc)  
Uncalibrated Drive Clutch - p/n 0746-148 (Modified Race Sled)

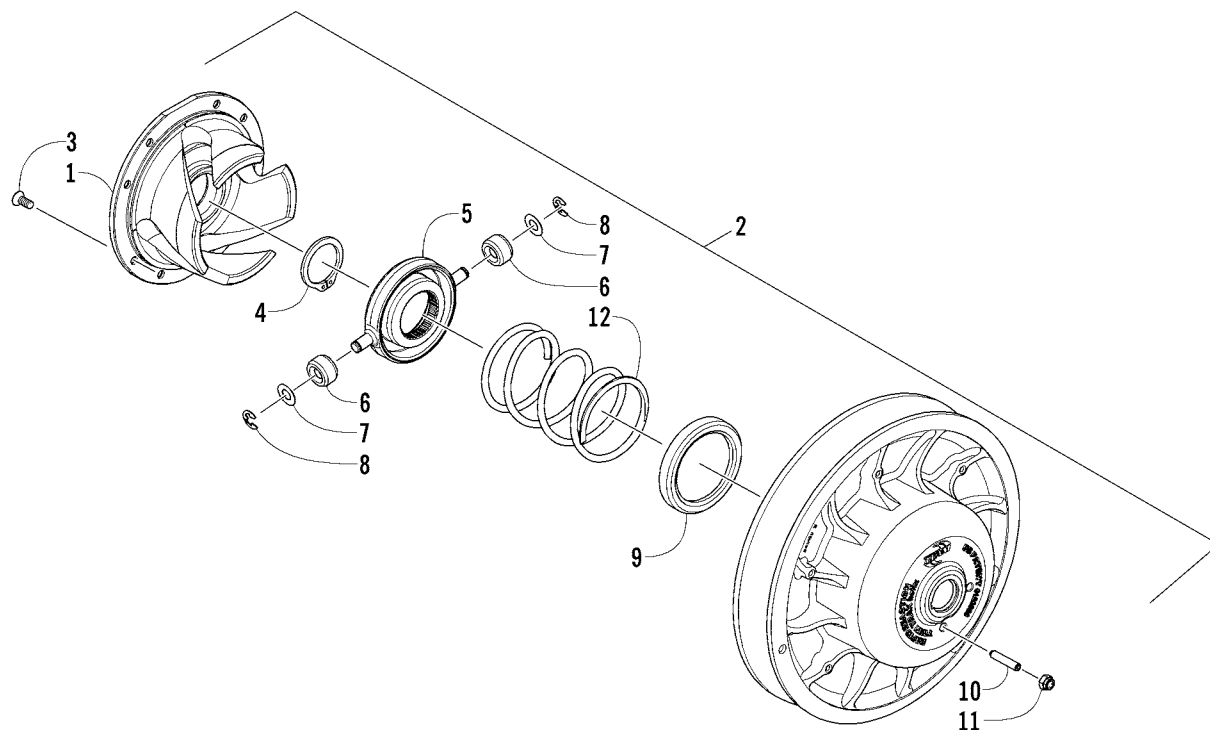
DRIVE CLUTCH

(Assembly p/n 0725-406 - 440 cc; p/n 0746-148\* - Modified Race Sled)

0740-227

Ref.	Part No.	Qty.	Description	Ref.	Part No.	Qty.	Description
1	0646-361	1	Sheave, Stationary (440 cc)	10	0646-265	2	Washer, Spacer
	0646-362	1	Sheave, Stationary (Modified Race Sled)	11	0746-118	1	Spider Assembly
2	1623-085	6	Screw, Machine	12	0646-684	1	Spring, Drive Clutch - Black (440 cc)
3	0646-326	1	Sheave, Movable (440 cc)	13	0746-097	1	Cover (440 cc)
	0646-351	1	Sheave, Movable (Modified Race Sled)		0746-113	1	Cover (Modified Race Sled)
4	0646-140	1	Nut	14	8051-212	6	Washer, Lock
5	0646-295	3	Pin, Cam Arm	15	0646-318	1	Washer, Spacer
6	0623-392	3	Nut, Lock				
7	0746-704	3	Arm, Cam (inc. 8) (440 cc)				* Modified Race Sled was built with uncalibrated drive clutch.
8	0646-160	3	● Bearing, Cam Arm				
9	0646-101	6	Washer, Cam Arm				



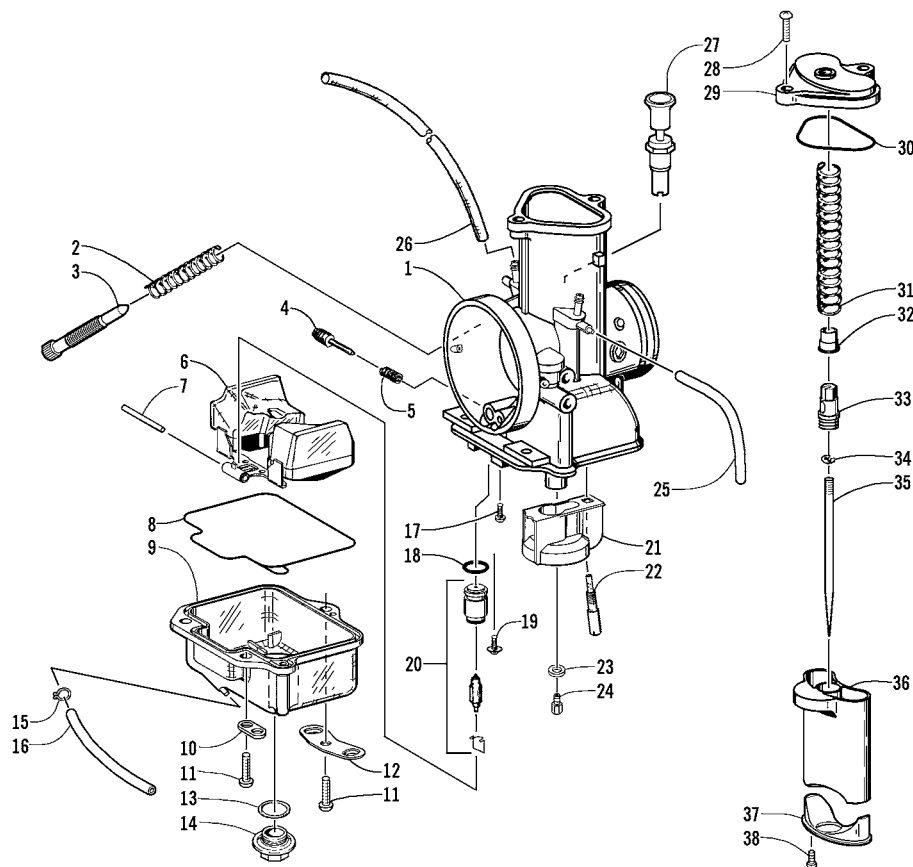


## DRIVEN CLUTCH

(Assembly p/n 0726-197 - 440 cc; 0726-210 - Modified Race Sled)

0739-112 \*Not a Service Part

Ref.	Part No.	Qty.	Description	Ref.	Part No.	Qty.	Description
1	<u>0648-737</u>	1	Bracket, Torque 70-44-32/68-48-46	7	0648-700	2	●● Washer, Thrust
	0648-710	1	Bracket, Torque 70-50-46/68-48-46 (Modified Race Sled)	8	0648-701	2	●● Ring, Retaining
2	0748-609	1	Driven Clutch, Uncalibrated (inc. 3-11)	9	0648-703	1	● Washer, Thrust
3	0648-695	8	● Screw, Cap	10	0648-707	1	● Screw, Set
4	0648-697	1	● Ring, Retaining	11	0648-708	1	● Nut, Lock
5	*	1	● Spider (inc. 6-8)	12	0648-702	1	Spring, Driven Clutch - Red/Black
6	0648-699	2	●● Roller, Clutch		0648-749	1	Spring, Driven Clutch - Black/White (Modified Race Sled)



## CARBURETOR

TMX34-31 (Assembly p/n 1670-605 - 440 cc)

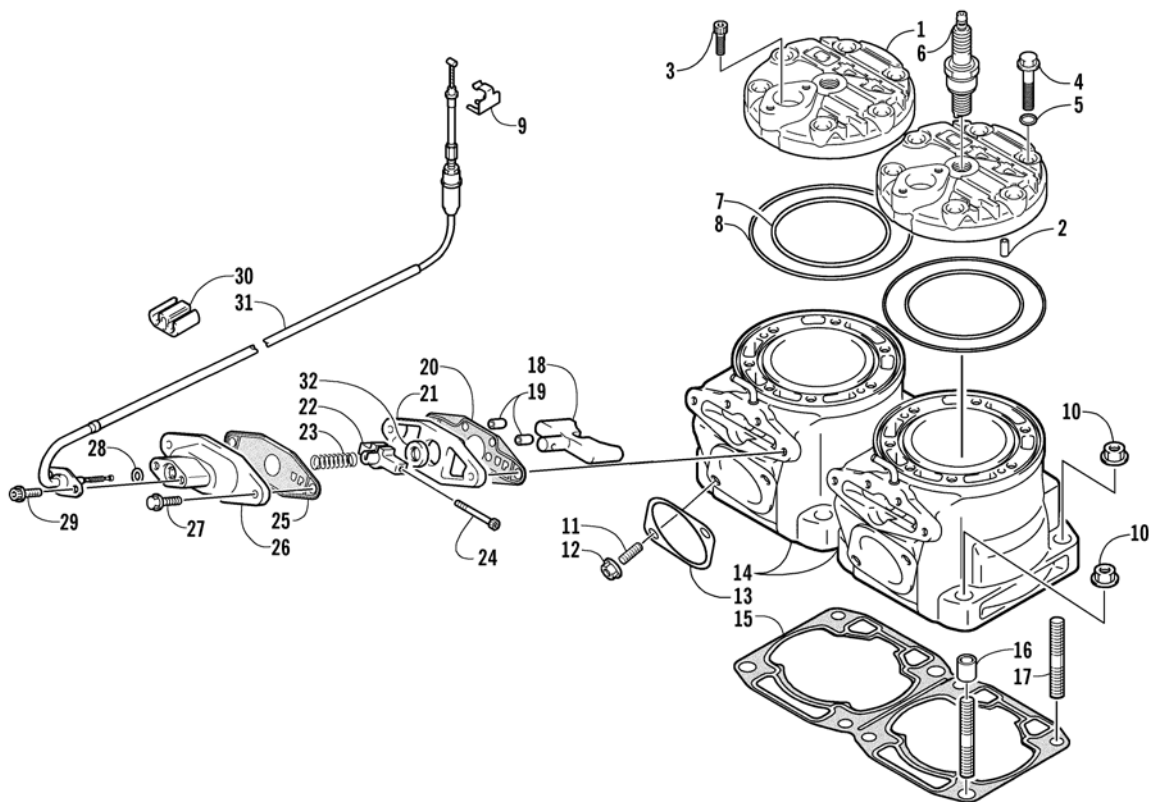
0738-240 \*Not a Service Part \*\*Optional

Ref.	Part No.	Qty.	Description	Ref.	Part No.	Qty.	Description
1	*	1	Mixing Body	23	6506-091	1	Washer
2	6505-981	1	Spring, Idle Speed Screw	24	6506-385	1	Main Jet 260***
3	6505-982	1	Screw, Idle Speed	25	6506-253	1	Hose
4	6505-988	1	Screw, Idle Air	26	6505-983	2	Hose, Vent
5	6505-987	1	Spring, Idle Air Screw	27	6506-334	1	Plunger, Starter
6	6505-994	1	Chamber, Float - Assembly	28	6505-984	2	Screw, Machine
7	6505-995	1	Pin, Float	29	6506-008	1	Cap, Top (inc. 30)
8	6506-015	1	Gasket, Float Chamber Assembly	30	6506-018	1	● Gasket
9	6506-256	1	Body, Float - Assembly	31	6506-009	1	Spring
10	6505-094	1	Plate, Hose	32	6506-006	1	Ring
11	6505-980	3	Screw, Machine	33	6506-007	1	Holder, Guide
12	6505-986	1	Plate	34	6505-628	1	E-Clip
13	6505-243	1	O-Ring, Drain Plug	35	6506-386	1	Jet Needle 6FM7-60
14	6506-254	1	Plug, Drain		6506-300	1	Jet Needle 6FM5-60**
15	6506-251	1	Clamp, Hose		6506-285	1	Jet Needle 6FM4-60**
16	6506-252	1	Hose		6506-174	1	Jet Needle 6FM2-60**
17	6505-996	1	Screw, Machine	36	6506-286	1	Valve, Throttle 3.5
18	6505-672	1	O-Ring		6506-172	1	Valve, Throttle 3.0**
19	6505-998	1	Screw, Machine		6505-990	1	Valve, Throttle 4.0**
20	6506-255	1	Valve, Needle 1.5		6505-991	1	Valve, Throttle 4.5**
21	6506-014	1	Holder, Guide	37	6506-303	1	Venturi
22	6506-002	1	Pilot Jet 22.5	38	6505-985	2	Screw
	6505-999	1	Pilot Jet 17.5**				
	6506-001	1	Pilot Jet 20**				
	6506-003	1	Pilot Jet 25**				
	6506-004	1	Pilot Jet 27.5**				
	6506-005	1	Pilot Jet 30**				

\*\*\*Alternate Carburetor Parts on page 51

## Parts List (Modified Race Sled)

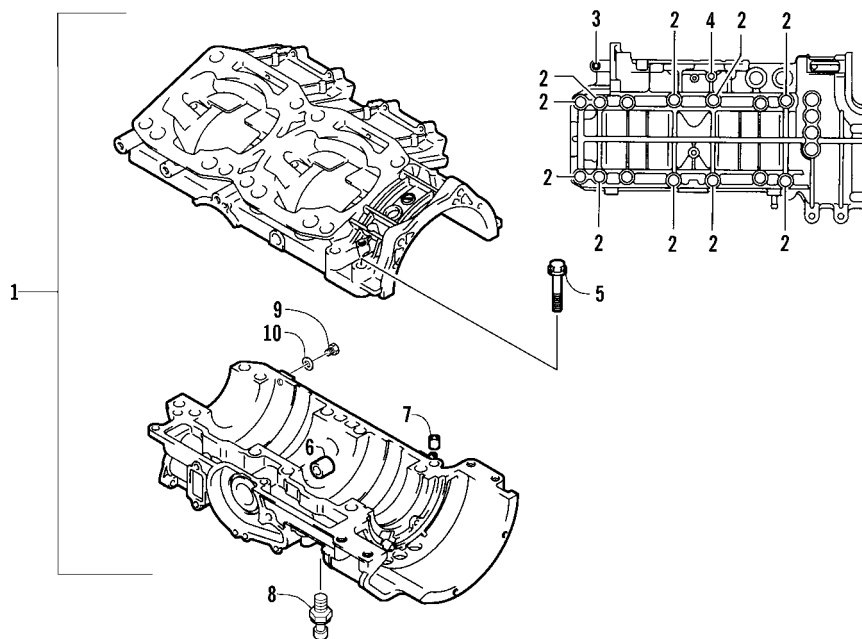
1	<u>0762-343</u>	1	Engine/Exhaust - Speedwerx (inc. 2-20)	11	<u>3006-989</u>	1	● 800 SX Engine Kit - Exhaust Valve
2	<u>3006-980</u>	1	● 800 SX Engine Kit - Machine Head	12	<u>3006-990</u>	1	● 800 SX Engine Kit - Silencer - 2 in.
3	<u>3006-981</u>	1	● 800 SX Engine Kit - Modified Cylinder	13	<u>3006-991</u>	1	● 800 SX Engine Kit - Short Pipe Spring
4	<u>3006-982</u>	1	● 800 SX Engine Kit - Piston Kit	14	<u>3006-992</u>	1	● 800 SX Engine Kit - CDI/Ignition Box
5	<u>3006-983</u>	1	● 800 SX Engine Kit - Twin Pipe (PTO)	15	<u>3006-993</u>	1	● 800 SX Engine Kit - Crankshaft Engine
6	<u>3006-984</u>	1	● 800 SX Engine Kit - Twin Pipe (MAG)	16	3006-493	2	● Gasket, Cylinder
7	<u>3006-985</u>	1	● 800 SX Engine Kit - Long Pipe Spring	17	3006-516	1	● Gasket, Exhaust
8	<u>3006-986</u>	1	● 800 SX Engine Kit - Modified Carburetor Assembly	18	3006-490	1	● O-Ring - D:1.9/ID:123.7
9	<u>3006-987</u>	1	● 800 SX Engine Kit - 2 in. Exhaust Gasket	19	3003-335	1	● O-Ring - Head, Inner
10	<u>3006-988</u>	1	● 800 SX Engine Kit - Exhaust Flange	20	0612-111	1	● Bumper, Molded - Rubber



## CYLINDER AND HEAD ASSEMBLY

0739-113

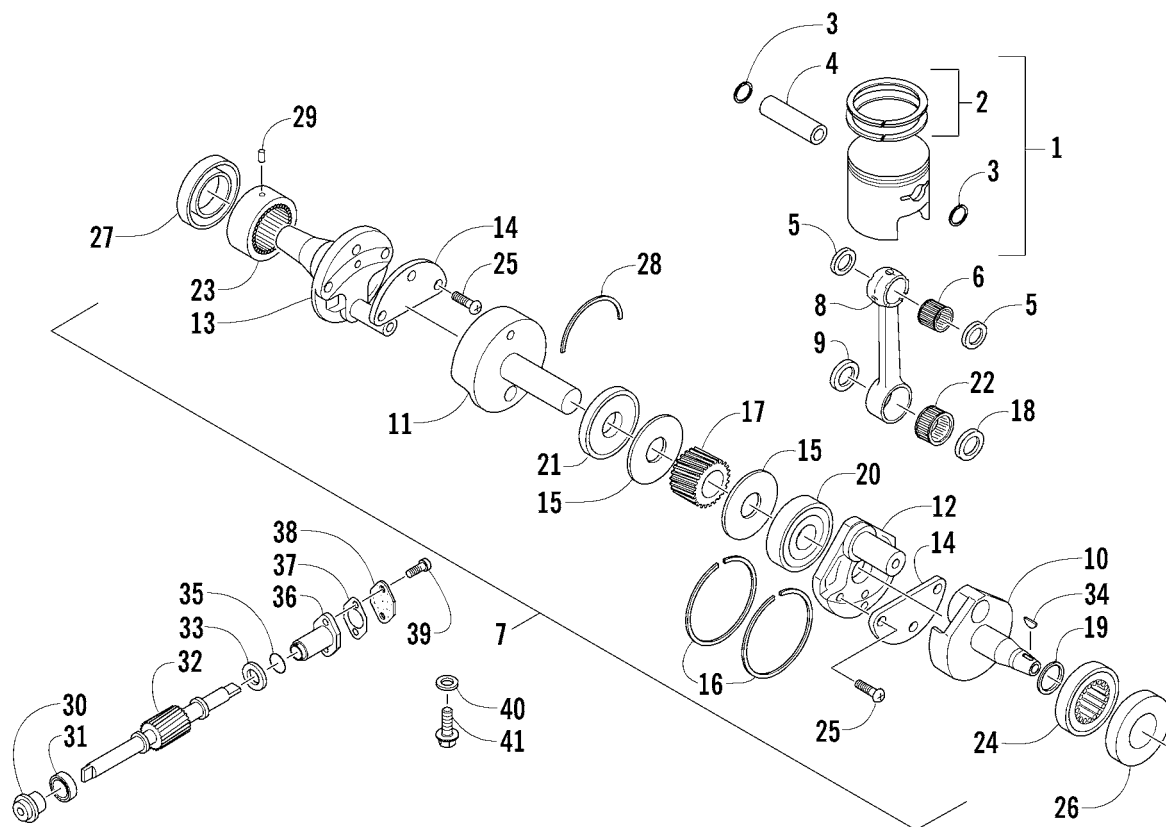
Ref.	Part No.	Qty.	Description	Ref.	Part No.	Qty.	Description
1	3006-622	2	Head, Cylinder (inc. 2)	17	3005-596	8	Bolt, Stud
2	3006-321	4	● Pin, Dowel	18	3006-739	2	Valve, Exhaust
3	3004-534	2	Bolt	19	3006-321	4	Pin, Exhaust Valve Dowel
4	3004-459	12	Bolt	20	3006-329	2	Gasket, Exhaust Valve
5	3003-227	12	O-Ring	21	3006-495	2	Plate, Exhaust Valve
6	0217-709	2	Plug, Spark (BR9EYA)	22	3005-860	2	Stopper, Exhaust Valve
7	3003-224	2	O-Ring	23	3006-484	2	Spring
8	3003-226	2	O-Ring	24	3005-983	2	Pin, Exhaust Valve
9	3005-747	1	Holder, Exhaust Valve Cable	25	3006-436	2	Gasket, Exhaust Valve Cover
10	3004-491	8	Nut	26	3006-425	2	Cover, Exhaust Valve
11	3004-279	4	Bolt, Stud	27	3004-442	4	Bolt
12	3004-326	4	Nut	28	3005-226	2	O-Ring
13	3003-503	2	Gasket, Exhaust	29	3005-744	4	Bolt
14	3006-738	2	Cylinder	30	3005-808	1	Clamp
15	3006-423	1	Gasket, Cylinder	31	3006-736	2	Cable, Exhaust Valve
16	3004-975	4	Pin, Dowel	32	3006-322	2	Seal, Oil - Exhaust Valve



## CRANKCASE ASSEMBLY

0738-227

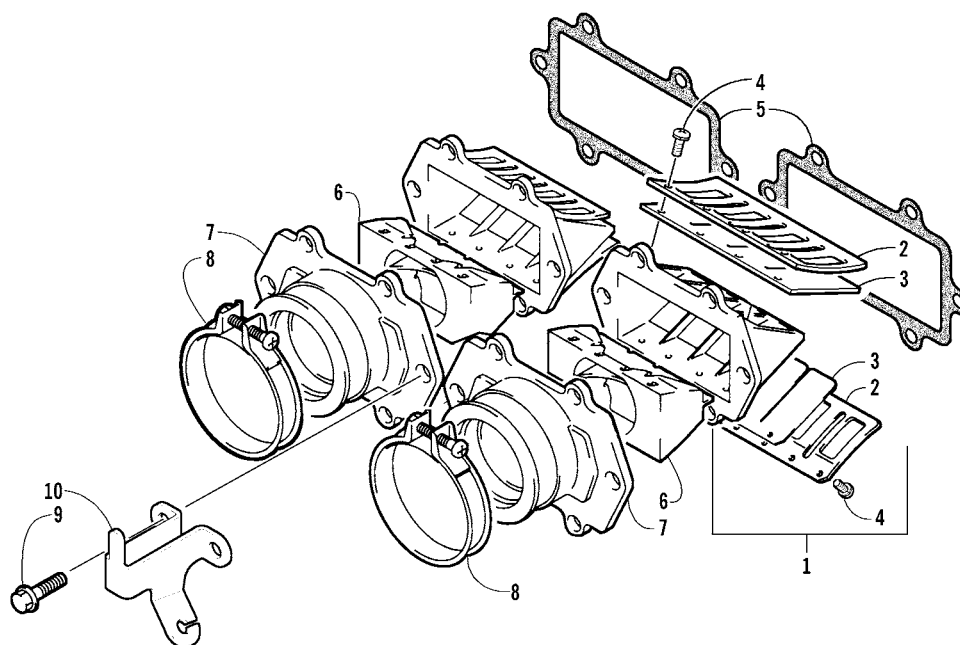
Ref.	Part No.	Qty.	Description	Ref.	Part No.	Qty.	Description
1	3006-737	1	Crankcase (inc. 2-7)	6	3003-647	1	● Bushing
2	3006-483	10	● Bolt	7	3005-206	2	● Pin, Dowel
3	3004-341	1	● Bolt	8	0630-140	1	Switch, Temperature
4	3423-393	1	● Bolt	9	3006-634	1	Plug
5	0693-303	4	● Bolt	10	3002-276	1	Gasket



## PISTON AND CRANKSHAFT

0740-219

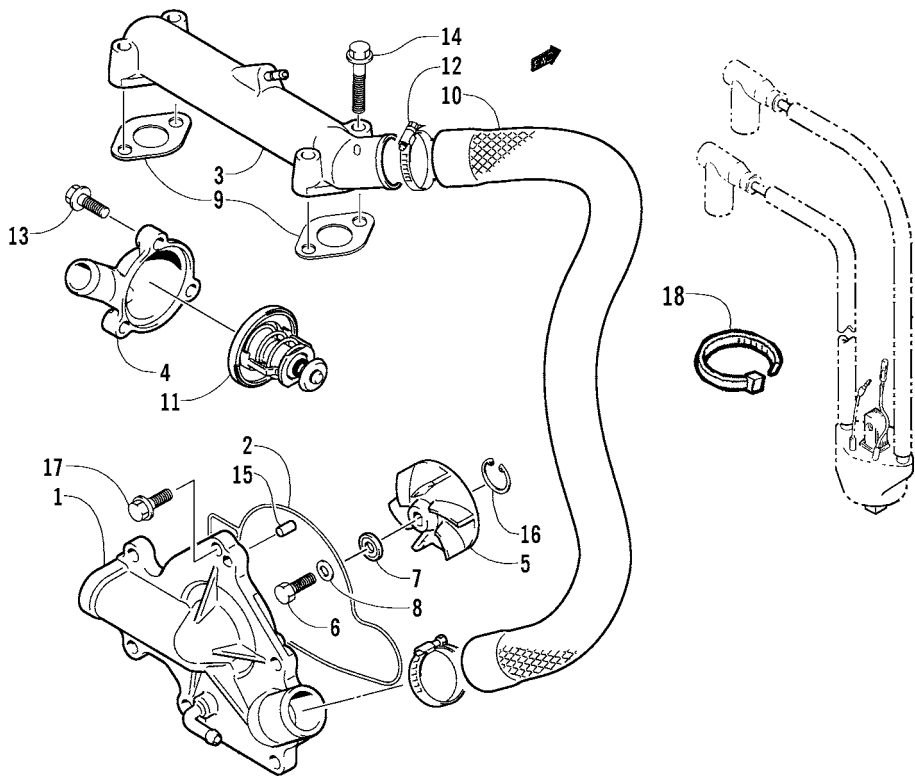
Ref.	Part No.	Qty.	Description	Ref.	Part No.	Qty.	Description
1	3006-740	2	Piston Set (inc. 2-3)	22	3005-505	2	● Bearing
2	3005-838	2	● Ring Set, Piston	23	3006-540	1	● Bearing
3	3003-537	4	● Circlip, Piston	24	3005-507	1	● Bearing
4	3005-363	2	Pin, Piston	25	3004-372	6	● Screw
5	3004-780	4	Washer	26	3008-525	1	Seal, Oil
6	3003-107	2	Bearing	27	3003-759	1	Seal, Oil
7	<u>3006-969</u>	1	Crankshaft Assembly (inc. 8-25)	28	3003-359	1	C-Ring
8	3006-344	2	● Connecting Rod	29	3003-658	4	Pin, Alignment
9	3005-494	2	● Washer, Crank Pin Bearing	30	3005-909	1	Seal, Mechanical - Water Pump
10	<u>3006-970</u>	1	● Crankshaft - Right	31	3004-760	1	Seal, Water Pump
11	<u>3006-971</u>	1	● Crankshaft - Middle	32	3006-354	1	Gear, Driven - Water Pump
12	<u>3006-972</u>	1	● Wheel, Crankshaft	33	3005-049	1	Shim, Water Pump Driven Gear
13	<u>3006-973</u>	1	● Crankshaft - Left	34	3010-070	1	Key
14	3004-961	1	● Balancer, Crankshaft	35	3005-126	1	O-Ring
15	3005-597	2	● Race, Middle Crank Seal	36	<u>3006-938</u>	1	Retainer, Driven Gear
16	3005-508	2	● Ring, Middle Crank Seal	37	3004-286	1	Gasket, Retainer Cover
17	3006-353	1	● Gear, Oil Pump Drive	38	3006-633	1	Cover, Retainer
18	3005-502	2	● Washer	39	3005-171	2	Bolt
19	3005-603	1	● Shim	40	3402-009	1	Gasket
20	3005-503	1	● Bearing	41	3423-112	1	Bolt
21	3005-504	1	● Bearing				



## REED VALVE ASSEMBLY

0737-244

Ref.	Part No.	Qty.	Description	Ref.	Part No.	Qty.	Description
1	3006-639	2	Reed Valve Assembly (inc. 2-4 and 6)	6	3006-351	2	Guide, Reed Valve
2	3005-877	4	● Stopper	7	3006-741	2	Pipe, Intake
3	3005-878	4	● Valve, Reed	8	3004-212	2	Clamp
4	3004-506	16	● Screw	9	3004-341	12	Bolt
5	3005-879	2	Gasket, Reed Valve	10	2606-836	1	Bracket

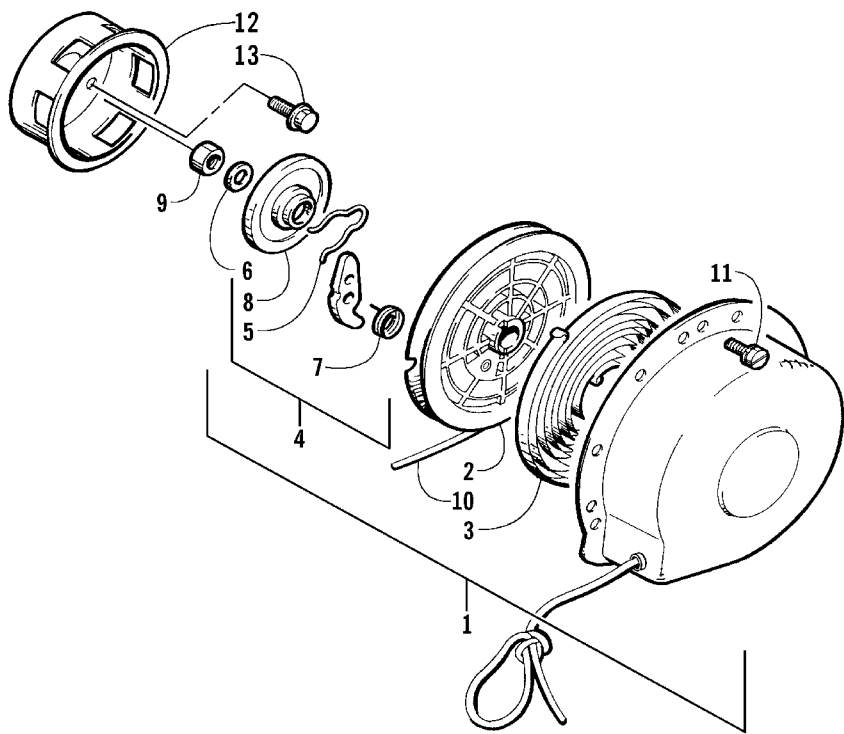


# WATER PUMP/WATER MANIFOLD

0738-263

Ref.	Part No.	Qty.	Description	Ref.	Part No.	Qty.	Description
1	3006-355	1	Cover, Water Pump	10	3006-360	1	Hose, Water Inlet
2	3006-356	1	O-Ring, Water Pump Cover	11	<del>3006-913</del>	1	Thermostat, Water
3	3006-619	1	Manifold, Water Inlet	12	3006-324	2	Clamp
4	<del>3006-974</del>	1	Cap, Thermostat	13	3004-512	3	Bolt
5	3005-697	1	Impeller, Water Pump	14	3004-442	4	Bolt
6	3003-426	1	Bolt	15	3005-899	2	Pin, Dowel
7	3003-431	1	Washer	16	3004-009	1	Circlip
8	3003-432	1	Gasket	17	3004-341	6	Bolt
9	3004-260	2	Gasket, Water Inlet Manifold	18	0123-788	2	Cable Tie - 7.5 in.





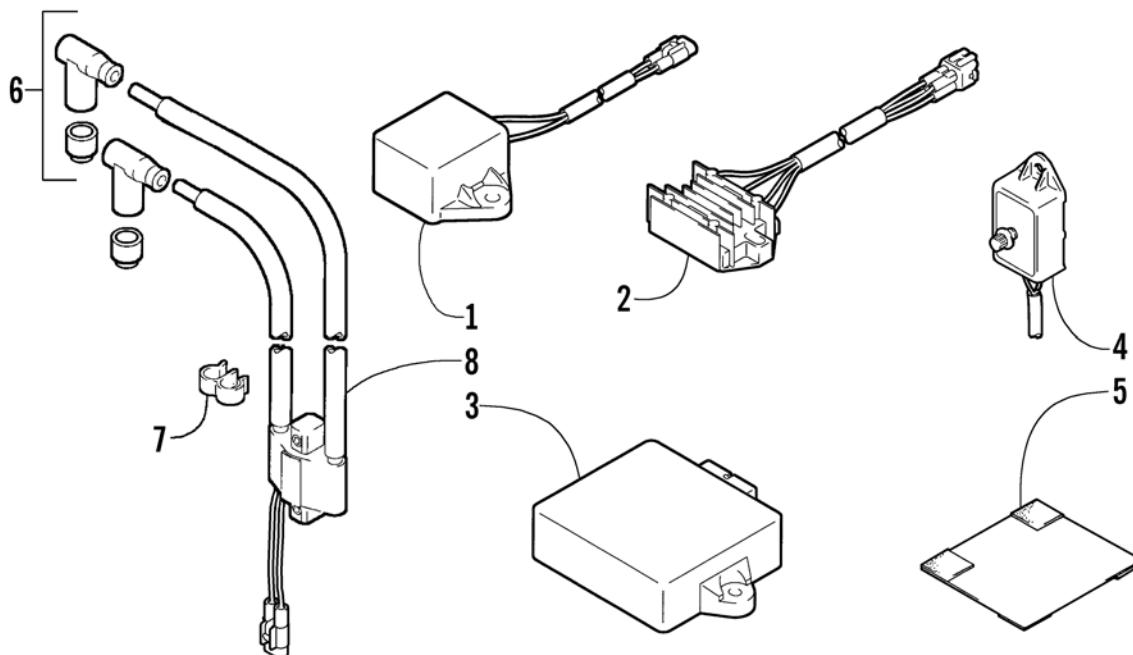
RECOIL STARTER

0737-558 \*Not a Service Part

Ref.	Part No.	Qty.	Description	Ref.	Part No.	Qty.	Description
1	<u>3006-915</u>	1	Starter Assembly (inc. 2-10)	8	3006-475	1	● Plate, Friction
2	3003-179	1	● Roller, Starter	9	3006-456	1	● Nut
3	3002-921	1	● Spring	10	<u>3006-889</u>	1	● Rope, Starter
4	3006-457	1	● Ratchet Set (inc. 5-7)	11	3004-383	4	Screw, Cap
5	*	1	● Spring, Friction	12	3003-929	1	Pulley, Starter
6	*	1	● Washer	13	3004-705	3	Screw, Cap
7	*	1	● Spring, Return				



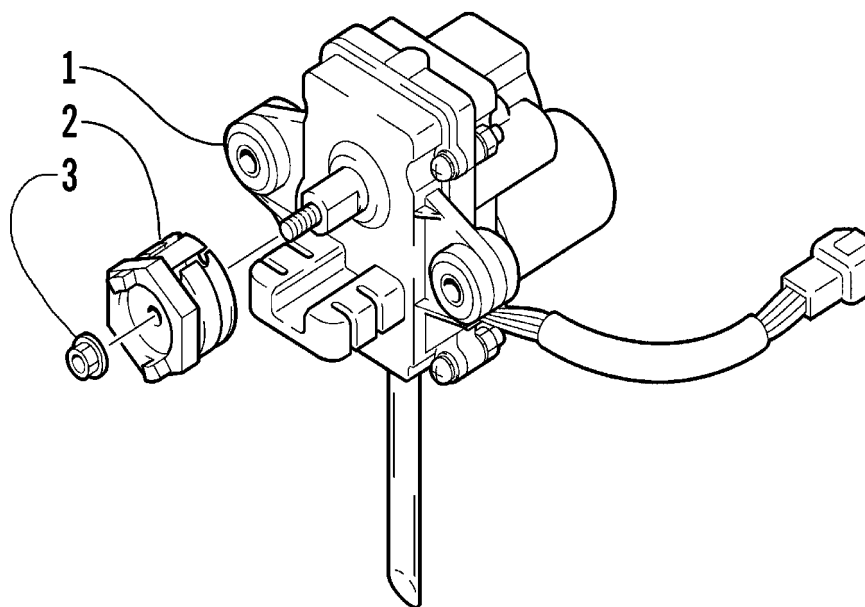
Ref.	Part No.	Qty.	Description	Ref.	Part No.	Qty.	Description
1	3006-734	1	Stator	8	3005-960	1	Plate, Stator Lead Wire
2	3006-362	1	Rotor/Flywheel	9	3004-338	1	Bolt
3	3006-364	1	Base, Stator - Plate	10	3004-706	3	Screw
4	3005-926	1	Sensor, Ignition Timing	11	3004-378	4	Bolt
5	3005-775	1	Grommet, Stator Lead Wire	12	3005-433	3	Bolt
6	3006-476	1	Bolt	13	3004-362	1	Washer, Lock
7	3005-987	1	Washer				



# ELECTRICAL

0739-118

Ref.	Part No.	Qty.	Description	Ref.	Part No.	Qty.	Description
1	3006-894	1	Condenser, Exhaust Valve	6	3006-367	2	Cap, Spark Plug - Assembly
2	3006-895	1	Regulator, Exhaust Valve	7	3005-387	1	Clamp
3	<u>3006-975</u>	1	CDI Unit	8	3006-692	1	Coil, Ignition - Assembly
4	3005-932	1	Unit, Timing Control		<u>3006-891</u>	1	Coil, Ignition - Assembly (Modified Race Sled)
5	3003-474	1	Cover, Connector				



Ref.	Part No.	Qty.	Description	Ref.	Part No.	Qty.	Description
1	3006-699	1	Servomotor	3	3006-700	1	Nut
2	3005-661	1	Pulley, Controller				

# ALTERNATE CARBURETOR PARTS

THROTTLE VALVES AVAILABLE (TMX-Style)		
SLIDE	CARBURETOR SIZE (mm)	P/N
3.0	—	6506-172
3.5	—	6505-989
4.0	—	6505-990
4.08	—	6506-301
4.5	—	6505-991



**PILOT JET**  
Size indicated in this area



**JET NEEDLE**  
Number indicated in this area

JET NEEDLES AVAILABLE (TMX-Style)	
JET NEEDLE (VM-Style)	P/N
6FM06-61	6506-335
6FM5-60	6506-300
6FM4-60	6506-285
6FM2-60	6506-174

PILOT JETS AVAILABLE (TMX-Style)			
JET NO..	P/N	JET NO.	P/N
17.5 mm (Steel)	6505-999	25	6506-003
20	6506-001	27.5	6506-004
22.5	6506-002	30	6506-005

# RELATED ITEMS

## 2005 440 Sno Pro

(Model No. S2005ACBPRUSG) (Model No. S2005ACBPROSG - International)

(Model No. S2005ACAMOUSG - Modified Race Sled)

3639-610	Cover, Machine (Storage) - Team Arctic	2257-145	Manual, Illustrated Parts
3639-609	Cover, Machine (Deluxe)	2257-157	Manual, Operator's
3639-761	Flyscreen - Chrome	3639-643	Running Board Clips
4639-044	Guard, Fox Airshox (PR)	2639-582	Skid Plate (Black)
2257-231	Handbook, Safety (E/F)	4639-028	Stud Kit 1.860 in. (86 pk)
3639-736	Hand Guard, Arctic Cat (PR) - Green	4639-038	Wearbar 8 in. Carbide - C & A Ski
3639-613	Hand Guard Mounting Kit	4639-039	Wearbar 10 in. Carbide - C & A Ski

■ NOTE: For a complete list of related items, refer to the current accessory catalog.

